



Fisheries and Oceans  
Canada

Pêches et Océans  
Canada

Canadian  
Coast Guard

Garde côtière  
canadienne

# Notices to Mariners

**Edition No. 07/2025**  
**July 25, 2025**



Safety First, Service Always

## Monthly Eastern Edition

Canada 

Notices to Mariners – Monthly Eastern Edition  
Edition No. 07/2025

Aussi disponible en français :  
Avis aux navigateurs – Édition mensuelle de l'Est  
Édition n° 07/2025

**Published under the Authority of:**

Canadian Coast Guard Programs  
Aids to Navigation and Waterways  
Fisheries and Oceans Canada  
Montreal, QC H2Y 2E7

For more information, contact [DFO.Notmar-Notmar.MPO@dfo-mpo.gc.ca](mailto:DFO.Notmar-Notmar.MPO@dfo-mpo.gc.ca).

© His Majesty the King in Right of Canada,  
as represented by the Minister of Fisheries, Oceans  
and the Canadian Coast Guard, 2025.

Cat. No. Fs152-8E-PDF (Electronic PDF, English)  
ISSN 2817-0075

Cat. No. Fs152-8F-PDF (Electronic PDF, French)  
ISSN 2817-0083

A web version is available here:

[Notices to Mariners – Monthly Editions](#) (English)

[Avis aux navigateurs – Publications mensuelles](#) (French)

## Explanatory Notes – Notices to Mariners (NOTMAR)

**Geographical positions** refer directly to the graduations of the largest scale Canadian Hydrographic Service chart (unless otherwise indicated).

**Bearings** refer to the true compass and are measured clockwise from 000° (North) clockwise to 359°; those relating to lights are from seaward.

**Visibility** of lights is that in clear weather.

**Depths** - The units used for soundings (metres, fathoms or feet) are stated in the title of each chart.

**Elevations** are normally given above Higher High Water, Large Tide (unless otherwise indicated).

**Distances** may be calculated as follows:

- 1 nautical mile = 1,852 metres (6,076.1 feet)
- 1 statute mile = 1,609.3 metres (5,280 feet)
- 1 metre = 3.28 feet

### Temporary and Preliminary Notices to Mariners – Section 1A of *Notices to Mariners*

These notices are indicated by a (T) or a (P), respectively. Please note that nautical charts are not amended by the Canadian Hydrographic Service for temporary (T) and preliminary (P) notices. It is recommended that mariners chart these corrections in pencil. For the list of charts affected by (T) & (P) notices, please refer to the current [Notices to Mariners - Monthly Summary of Temporary and Preliminary Notices](#) publication.

### Suggestions and Corrections Form

This form is specifically for suggestions and corrections to Notices to Mariners publications. It is available [online](#) and also in [fillable PDF format](#) included with the monthly publication ZIP file.

To submit comments and suggestions on possible improvements to the various publications and services: [DFO.Notmar-Notmar.MPO@dfo-mpo.gc.ca](mailto:DFO.Notmar-Notmar.MPO@dfo-mpo.gc.ca).

To report chart discrepancies and/or corrections to the *Canadian Sailing Directions* booklets: Fill out the [Marine Information Reporting Form](#) and/or email [chsinfo@dfo-mpo.gc.ca](mailto:chsinfo@dfo-mpo.gc.ca).

To report emergencies or navigational hazards: [Contact your nearest MCTS centre](#)

- VHF channel 16 (156.8 MHz)
- MF/HF frequency 2182 kHz/4125 kHz (where available)
- \*16 on a cellphone (where available)

### NOTMAR Website – Monthly Editions, Chart Corrections and Chart Patches

The NOTMAR website allows users to access the [monthly publications](#), [chart corrections](#), and [chart patches](#).

Users can subscribe for free to the [email notification service](#) to receive notifications when charts of interest are updated, including their patches, as well as when a new Monthly Edition of *Notices to Mariners* is published.

In addition, the monthly publication and related files to download, such as chart patches, can be obtained all together through the download of a single ZIP file.

## Explanatory Notes – Canadian Hydrographic Service (CHS)

### Chart Corrections – Section 2 of *Notices to Mariners*

Corrections to nautical charts will be listed in numerical order by chart number. Each chart correction listed applies only to that particular chart. Related charts, if any, will have their own specific correction listed separately.

Users should also refer to CHS *Chart 1: Symbols, Abbreviations and Terms* for additional information pertaining to the correction of charts.

The illustration below describes the elements that will comprise a typical Section 2 chart correction:

	Chart Number	Chart Title	Chart latest new edition date	Horizontal Chart Datum	Last Correction
	1312	Lac Saint-Pierre - New Edition - 10-MAY-2019 - NAD 1983			
Weekly Chart Correction Date	05-AUG-2022				LN/D. 24-SEP-2021
	Amend			46°03'32.4"N 073°03'21.6"W	
		(See Chart 1 P16)		(Q2022035) LL(2177)	DFO(6410690-01)
	Chart Action	Chart 1 Reference No.	CCG Reference No.	List of Lights No.	CHS Reference No.

The last correction number is identified with the **LN/D** or **Last Notice to Mariners Number / Date**.

Mariners are advised that only the most critical changes that directly affect safety to navigation are issued in "Section 2 – Chart Corrections." This limitation is required to ensure that charts remain as clear and easy to read as possible. As a result, mariners may see minor discrepancies of a non-critical nature between information in official publications. For example, a small change in the nominal range or focal height of a light may not result in the production of a chart correction in *Notices to Mariners*, but may result in a correction in the [List of Lights, Buoys and Fog Signals](#) publication.

Note: In the case of a discrepancy between information provided on CHS charts relating to aids to navigation, and the *List of Lights, Buoys and Fog Signals* publication, the latter shall be deemed as containing the most up-to-date information.

## Explanatory Notes – Marine Communications and Traffic Services (MCTS)

### Navigational Warnings / Notices to Shipping

The Canadian Coast Guard (CCG) is implementing a number of changes to the aids to navigation system in Canada.

These changes are advertised as Navigational Warnings, formerly called Notices to Shipping<sup>1</sup>, that are broadcast by the CCG, and are then followed up with Notices to Mariners, then charts are updated by hand correction, reprints or new editions.

Mariners are advised that all relevant Navigational Warnings (NAVWARN) should be kept until superseded by Notices to Mariners or through revised charts issued by the Canadian Hydrographic Service (CHS).

NAVWARN are accessible on the applicable regional page on the [CCG Navigational Warnings](#).

CHS is reviewing the impact of these changes with CCG and together are preparing an action plan on the issuing of chart revisions.

For further information, contact your regional NAVWARN Issuing Desk.

<b>Atlantic Region (North)</b> <b>*Port aux Basques MCTS Centre</b>  “N” Series NAVWARN  Canadian Coast Guard 49 Stadium Rd. P.O. Box 99 Port aux Basques, NL A0M 1C0  Telephone: 709-695-2168 or 1-800-563-9089 Facsimile: 709-695-7784  Email: <a href="mailto:NAVWARN.MCTSPortAuxBasques@innav.gc.ca">NAVWARN.MCTSPortAuxBasques@innav.gc.ca</a>	<b>Central Region</b> <b>*Prescott MCTS Centre</b>  “Q” and “C” Series NAVWARN  Canadian Coast Guard 401 King Street West P.O. Box 1000 Prescott, ON K0E 1T0  Telephone: 613-925-0666 Facsimile: 613-925-4519  Email: <a href="mailto:NAVWARN.MCTSPrescott@innav.gc.ca">NAVWARN.MCTSPrescott@innav.gc.ca</a>
<b>Atlantic Region (South)</b> <b>*Sydney MCTS Centre</b>  “M” Series NAVWARN  Canadian Coast Guard 1190 Westmount Road Sydney, NS B1R 2J6  Telephone: 902-564-7751 or 1-800-686-8676 Facsimile: 902-564-7662  Email: <a href="mailto:NAVWARN.MCTSSydney@innav.gc.ca">NAVWARN.MCTSSydney@innav.gc.ca</a>	<b>Arctic Region</b> <b>*Iqaluit MCTS Centre</b> <i>Operational from approximately mid-May until late December.</i>  “A” Series NAVWARN  Canadian Coast Guard P.O. Box 189 Iqaluit, NU X0A 0H0  Telephone: 867-979-5269 Facsimile: 867-979-4264  Email: <a href="mailto:NAVWARN.MCTSIqaluit@innav.gc.ca">NAVWARN.MCTSIqaluit@innav.gc.ca</a>

\*Service available in English and in French.

<sup>1</sup> The expression “Notice to Shipping” was changed to “Navigational Warning” in January 2019.

## Table of Contents

<b>Section 1: General and Safety Information</b>	<b>1</b>
*505/23 Canadian Hydrographic Service – Magnetic Declination Calculations .....	1
*1207/23 Canadian Hydrographic Service – Inappropriate Geographical Names Review Process .....	1
*405/25 Saguenay–St. Lawrence Marine Park - Beluga Whale Protection: Slowdown Area at the Mouth of the Saguenay Fjord and Area Closure at Baie Sainte-Marguerite .....	1
*406/25 Saguenay–St. Lawrence Marine Park and Surrounding Waters – Whale Protection .....	4
*519(P)/25 Scott Islands – Paper Chart to be Discontinued .....	5
*601/25 Protecting the North Atlantic Right Whale: Speed Restriction Measures in the Gulf of St. Lawrence .....	6
*701/25 Canadian Hydrographic Service – Nautical Charts .....	14
*702/25 Canadian Hydrographic Service – Electronic Navigational Charts .....	14
*703/25 Transport Canada - Ship Safety Bulletins #10, #11, #12 and #13/2025 .....	17
*704/25 Plans Baie des Chaleurs / Chaleur Bay - Côte sud / South Shore – Unlit Buoys Permanently Changed .....	17
*705/25 Grindstone Point to/à Berens River – Unlit Buoys Repositioned .....	18
<b>Section 1A: Temporary and Preliminary Notices</b>	<b>19</b>
Reminder – Comment Period for Active Preliminary Notices .....	19
*707/25 Head of / Fond de Placentia Bay – Subsurface Moorings Removed .....	19
*708(P)/25 St. Marys Bay – Fog Signal to be Discontinued .....	20
*709(P)/25 Sault-au-Cochon à/to Québec – Aid to Navigation to be Abandoned .....	21
*710(T)/25 Hamilton Harbour – Waterway Information: Shallow Depth Reported .....	21
*711(T)/25 Port of Thunder Bay – Obstruction: Submerged Object .....	21
*712(T)/25 Whiskey Jack Island to/à Red Deer River – Waterway Information: Shallow Depth Reported .....	21
*713(T)/25 Lake Manitoba / Lac Manitoba (Southern Portion / Partie sud) – Waterway Information: Shallow Depth Reported .....	22
<b>Section 2: Chart Corrections</b>	<b>23</b>
<b>Section 3: Radio Aids to Marine Navigation Corrections</b>	<b>34</b>
*714/25 Radio Aids to Marine Navigation 2025 (Atlantic, St. Lawrence, Great Lakes, Lake Winnipeg, Arctic and Pacific) .....	34
<b>Section 4: Canadian Sailing Directions Corrections</b>	<b>35</b>
<b>Section 5: List of Lights, Buoys and Fog Signals Corrections</b>	<b>36</b>

## Numerical Index of Canadian Charts Affected

This numerical index lists all nautical charts mentioned in this monthly edition of Notices to Mariners. Only charts appearing in Section 2 of this publication require a chart correction. The appearance of charts in all other sections, particularly those related to the correction of other nautical publications, is included here for reference.

Chart No.	Pages	Chart No.	Pages	Chart No.	Pages
1234	<a href="#">37</a>	4515	<a href="#">30, 31</a>		
1314	<a href="#">14</a>	4518	<a href="#">31, 32</a>		
1317	<a href="#">21</a>	4530	<a href="#">36</a>		
1320	<a href="#">37</a>	4679	<a href="#">19</a>		
1430	<a href="#">19</a>	4825	<a href="#">36</a>		
1439	<a href="#">23</a>	4839	<a href="#">19</a>		
1513	<a href="#">23</a>	4843	<a href="#">36</a>		
1550	<a href="#">38</a>	4905	<a href="#">32</a>		
2017	<a href="#">23</a>	4906	<a href="#">32</a>		
2020	<a href="#">24</a>	4909	<a href="#">32</a>		
2021	<a href="#">24</a>	4913	<a href="#">37</a>		
2025	<a href="#">38</a>	4920	<a href="#">17, 33</a>		
2059	<a href="#">24</a>	5300	<a href="#">33</a>		
2067	<a href="#">21</a>	5450	<a href="#">33</a>		
2085	<a href="#">37, 38</a>	6022	<a href="#">33</a>		
2181	<a href="#">38</a>	6241	<a href="#">33</a>		
2314	<a href="#">21</a>	6267	<a href="#">18</a>		
3625	<a href="#">5, 19</a>	6274	<a href="#">21</a>		
4011	<a href="#">24</a>	6505	<a href="#">22</a>		
4116	<a href="#">24</a>	7010	<a href="#">33</a>		
4117	<a href="#">36</a>	7011	<a href="#">33</a>		
4118	<a href="#">20, 36</a>				
4201	<a href="#">37</a>				
4202	<a href="#">25, 36</a>				
4227	<a href="#">26</a>				
4234	<a href="#">26, 27, 28</a>				
4237	<a href="#">28</a>				
4320	<a href="#">28</a>				
4321	<a href="#">28, 29</a>				
4328	<a href="#">29, 30</a>				
4386	<a href="#">30</a>				
4425	<a href="#">30</a>				
4483	<a href="#">37</a>				

## Section 1: General and Safety Information

---

### **\*505/23 Canadian Hydrographic Service – Magnetic Declination Calculations**

(Recurrent publication of notice \*505/23, originally published in the *Notices to Mariners – Monthly Eastern Edition* 05/2023 publication.)

Mariners are advised that CHS has adopted the harmonized World Magnetic Model (WMM), as found on the NCEI/NOAA website. Old compass rose declination information on CHS navigational products can be updated using this website: <https://www.ngdc.noaa.gov/geomag/calculators/magcalc.shtml#declination>. While the differences in the model declinations are small each year, they can become more significant over a large period of time.

### **\*1207/23 Canadian Hydrographic Service – Inappropriate Geographical Names Review Process**

(Recurrent publication of notice \*1207/23, originally published in the *Notices to Mariners – Monthly Eastern Edition* 12/2023 publication.)

The records of the Canadian Hydrographic Service could contain geographical names that may be considered inappropriate, offensive and derogatory. Geographical naming authorities are in the process of addressing many offensive place names, the review process is underway. For more information, about inappropriate geographical names, please see the [following announcement](#).

### **\*405/25 Saguenay–St. Lawrence Marine Park - Beluga Whale Protection: Slowdown Area at the Mouth of the Saguenay Fjord and Area Closure at Baie Sainte-Marguerite**

(Recurrent publication of notice \*405/25, originally published in the *Notices to Mariners – Monthly Eastern Edition* 04/2025 publication.)

The Saguenay–St. Lawrence Marine Park and its surrounding area are at the heart of endangered beluga whale critical summer habitat. Marine mammal protection measures have been put in place in accordance with the *Marine Activities in the Saguenay–St. Lawrence Marine Park Regulations* within the limits of the Marine Park.

However, important feeding, calving and rearing areas for beluga whales require greater protection to ensure the recovery of the species. The portion of the Saguenay situated between the mouth of the Fjord and Baie Sainte-Marguerite is one of the areas most used by females and their young from May to October. The mouth of the Saguenay is known as a feeding ground and Baie Sainte-Marguerite as a calving and rearing area.

In order to prevent collisions with beluga whales, a compulsory 15-knot slowdown area is in effect from May 1st to October 31st at the mouth of the Saguenay. To ensure tranquility for female belugas and their young during the critical calving period, access to Baie Sainte-Marguerite is prohibited to all vessels from June 21st to September 21st, except for special authorizations (see description below).

For safety reasons, the slowdown area measure at the mouth of the Saguenay Fjord does not apply to cargo ships (see the monthly edition of Notice to Mariners from May to October for voluntary protection measures in the St. Lawrence Estuary). An enhanced vigilance is, however, recommended to all navigators between the mouth of the Saguenay Fjord and Baie Sainte-Marguerite for the protection of beluga whales.

For more information on the Saguenay–St. Lawrence Marine Park, see notice 5C of the *Notices to Mariners Annual Edition 2025* or visit the [Saguenay-St. Lawrence Marine Park website](#).



## REGULATORY PROTECTION MEASURES — BELUGA WHALE

### Entire Marine Park Territory:

- When beluga whales are less than half a nautical mile (926 metres) from a motorized vessel, the vessel must maintain a steady speed of between 5 and 10 knots.
- All vessels, including human-powered vessels (kayaks and canoes), must continue to move forward and maintain their heading.
- All vessels must maintain a minimum distance of 400 metres from beluga whales at all times.

For more information concerning the regulations, consult the [“Navigate” section of the Saguenay-St. Lawrence Marine Park website](#).

### Mouth of the Saguenay Fjord (Figure 1) — Slowdown Area (area crosshatched in red):

- Maximum speed at the mouth of the Saguenay between buoys S7 and S8 and the ferry docks between Baie-Sainte-Catherine and Tadoussac is 15 knots from May 1<sup>st</sup> to October 31<sup>st</sup>.

### Baie Sainte-Marguerite (Figure 2) — Area Closure (red area):

- From June 21st to September 21st, vessels must not enter the red area, which follows a line between Cap Nord-Ouest and Cap Sainte-Marguerite.
- Special authorizations are granted only for kayaks, canoes and recreational fishermen who must travel without stopping along a corridor within 10 metres of the shore or in shallow areas.

## VOLUNTARY PROTECTION MEASURES

### Baie Sainte-Marguerite sector (Figure 2) — Transit Area (area crosshatched in yellow):

- From June 21st to September 21st, navigation in this area is recommended at a speed of between 5 and 10 knots without stopping.

The purpose of this transit area is to favour respect of the *Marine Activities in the Saguenay–St. Lawrence Marine Park Regulations*, since beluga whales are often present in the Baie Sainte-Marguerite sector.

### Information

All incidents, including collisions with whales, must be reported without delay by calling 1-866-508-9888. For any other situation concerning a marine mammal that is either dead or in trouble, contact the Marine Mammal Emergency Response Network at 1-877-722-5346, or use VHF channel 16.

Figure 1

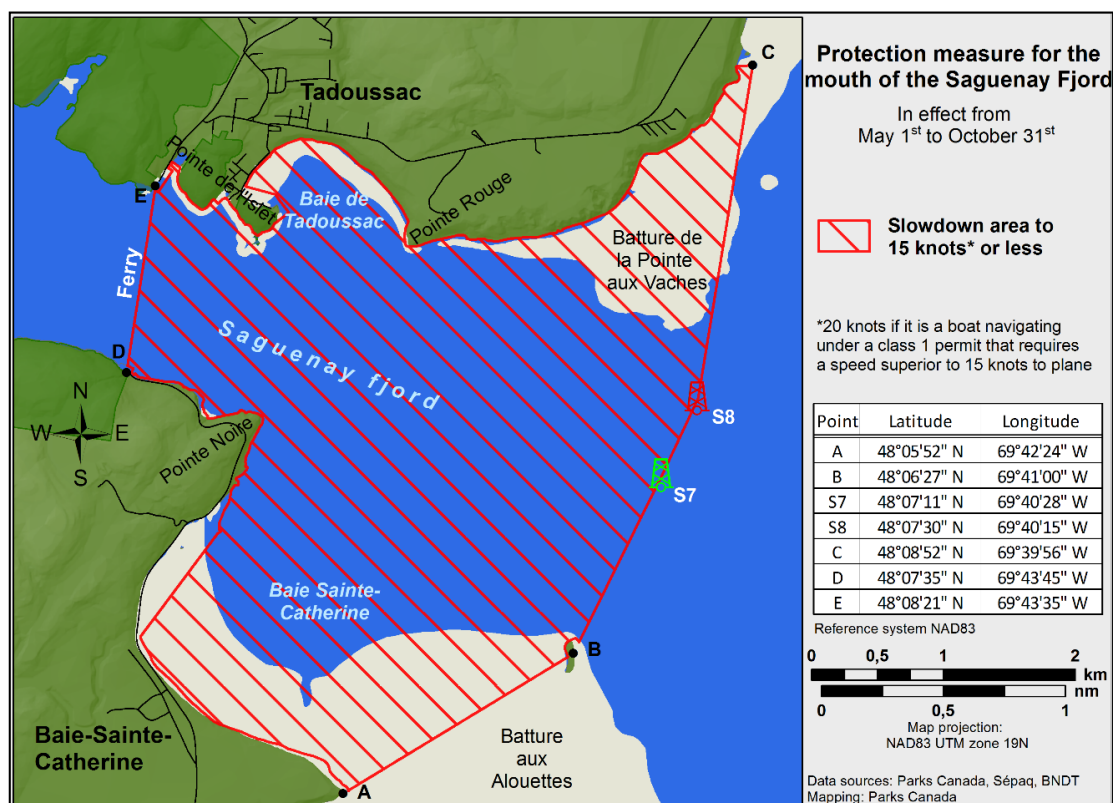
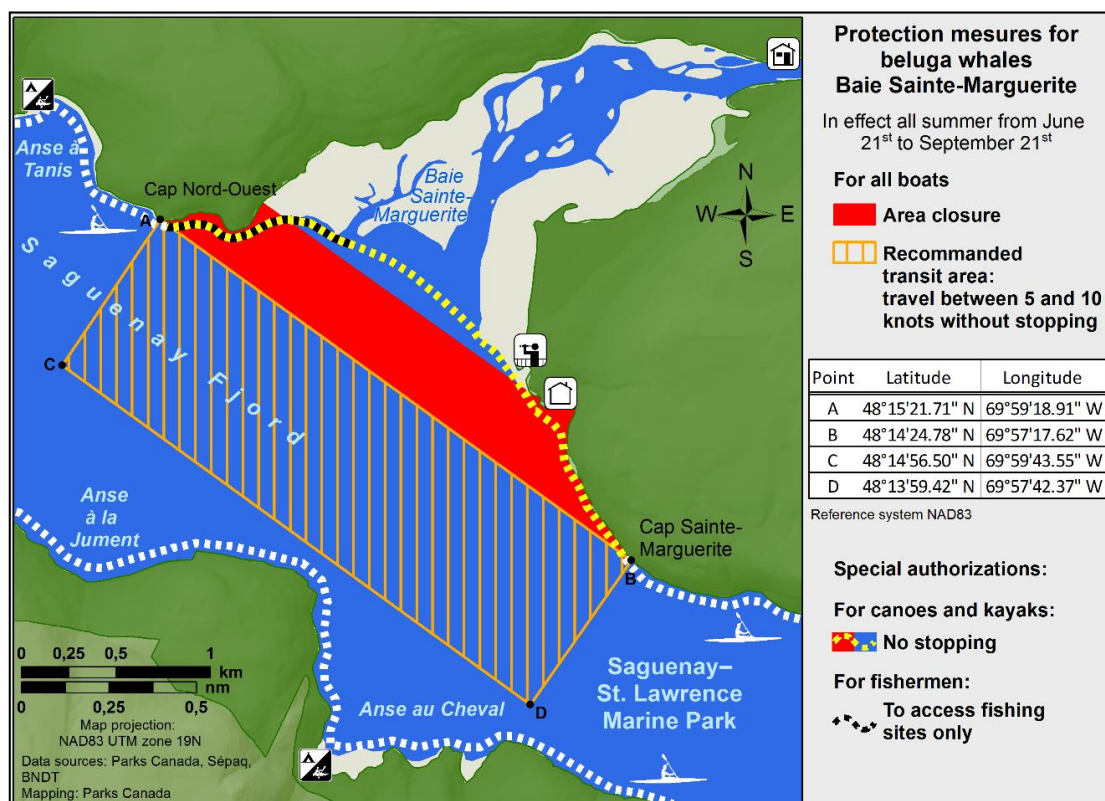


Figure 2



## **\*406/25 Saguenay–St. Lawrence Marine Park and Surrounding Waters – Whale Protection**

(Recurrent publication of notice \*406/25, originally published in the *Notices to Mariners – Monthly Eastern Edition* 04/2025 publication.)

The waters in and around the Saguenay–St. Lawrence Marine Park are well known for the resident endangered beluga population and the wide diversity of whales that migrate there to feed, particularly between April and November.

### **REGULATORY PROTECTION MEASURES**

All whale species that are found in the St. Lawrence are protected under the *Marine Mammal Regulations*, pursuant to the *Fisheries Act*. Within the boundaries of the Marine Park, specific measures are set out in the *Marine Activities in the Saguenay–St. Lawrence Marine Park Regulations*, pursuant to the establishment of the *Saguenay–St. Lawrence Marine Park Act*. Any collision with a marine mammal within the Marine Park must immediately be reported to a park warden at 1-866-508-9888. For collisions that occur outside the Marine Park or for any situation involving a marine mammal that is dead or in trouble, contact the emergency network at 1-877-722-5346 or on VHF channel 16.

For more information on the Saguenay–St. Lawrence Marine Park, see notice 5C of the *Notices to Mariners Annual Edition 2025*.

### **VOLUNTARY PROTECTION MEASURES**

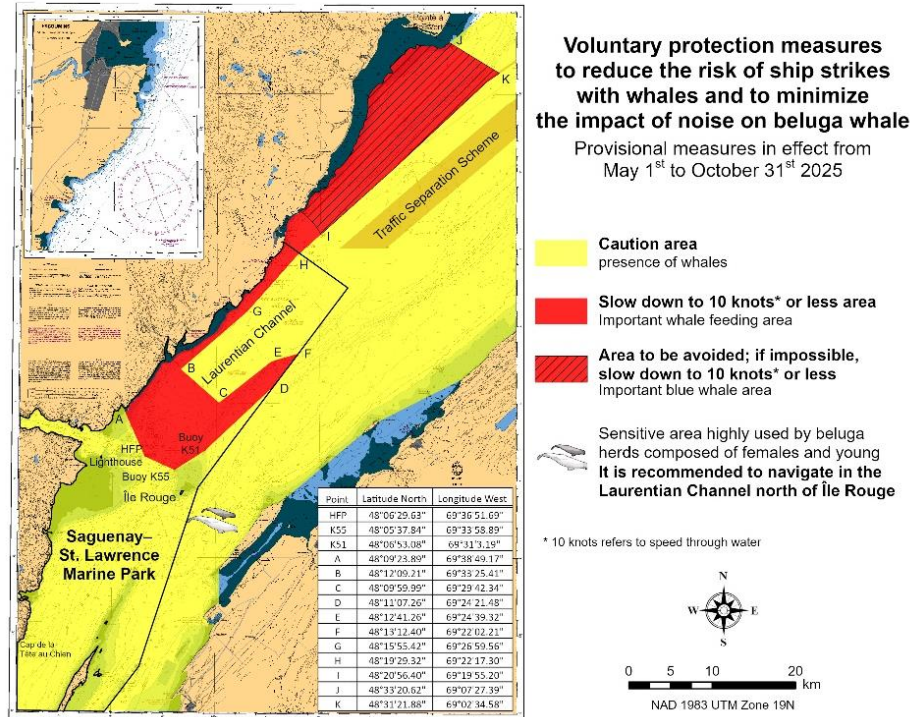
Provisional measures in effect from May 1 to October 31, 2025. See map at the end of this notice.

These measures apply to merchant vessels and cruise ships between Pointe à Boisvert and Cap de la Tête au Chien to prevent collisions with whales. These measures should only be taken when they will not jeopardize navigational safety.

**Caution area (yellow area):** To reduce the risk of collisions with whales that can be present anywhere in this area, heightened vigilance of navigators is critical. Posting a lookout is recommended in order to increase the chances of seeing the whales and thus taking necessary measures to avoid them. If bypassing the whales is not possible, slow down and wait for the animals to move away to a distance greater than 400 metres (0.215 nautical miles) before resuming original speed. It is more difficult to see the animals at night therefore increased caution is recommended.

**Slow down to 10 knots or less area (red area):** To reduce the risk of collisions with whales in this feeding area, it is recommended that vessels slow down to a maximum speed through the water of 10 knots and post a lookout. It is further recommended to remain in the Laurentian Channel to the north of Île Rouge to minimize the impact of noise in a sensitive area south of this island, which is highly frequented by herds of beluga whales composed of females and young.

**Area to be avoided (hatched red area):** To reduce noise and the risk of collisions with whales, vessels should avoid transiting through this area which is highly frequented by blue whales, an endangered species. If the area cannot be avoided, slow down to a speed through the water of 10 knots or less.



### \*519(P)/25 Scott Islands – Paper Chart to be Discontinued

(Recurrent publication of notice \*501/25, originally published in the *Notices to Mariners – Monthly Eastern Edition* 05/2025 publication.)

Reference chart: 3625

The Canadian Hydrographic Service proposes to permanently discontinue paper chart 3625 called Scott Islands.

Mariners and other interested parties are invited to comment on this action until August 31, 2025.

Comments should be directed to the [Canadian Hydrographic Service email address](#).

Any objections raised must state the facts on which they are based and should include supporting information on safety, commerce and public benefit.

## **\*601/25 Protecting the North Atlantic Right Whale: Speed Restriction Measures in the Gulf of St. Lawrence**

(Recurrent publication of notice \*601/25, originally published in the *Notices to Mariners – Monthly Eastern Edition* 06/2025 publication.)

Reference: Notice 501/25 is cancelled

### **Purpose**

This notice describes the speed and navigational restriction zones that vessels must follow in the Gulf of St. Lawrence.

The Government of Canada has established these zones to reduce the risk of vessel colliding with North Atlantic right whales (NARW).

### **Background**

Due to changing migration patterns of North Atlantic right whales and their increased presence in the Gulf of St. Lawrence, the Government of Canada has set seasonal speed restrictions in specific zones. These speed restrictions zones are defined as “static zones”, “dynamic shipping zones”, “seasonal management areas”, a “voluntary seasonal slowdown zone” and a “restricted area”. [See the map below for details.](#)

Note: Vessels **must follow** Navigational Warnings outlining the speed restrictions. The *Interim Order No.3 for the Protection of North Atlantic Right Whales (Eubalaena Glacialis) in the Gulf of St. Lawrence, 2025* enables the issuance of Navigational Warnings (NAVWARNs) imposing speed restrictions and navigation restrictions.

Speed restriction zones are described in monthly Notices to Mariners (NOTMARs), which are published by the Canadian Coast Guard. The status of these zones is broadcasted through NAVWARNs, which are published by the Coast Guard’s Marine Communications and Traffic Services Centres.

### **CHANGES TO SPEED RESTRICTION ZONES AND MEASURES**

Based on consultations with industry and on scientific data, changes to the speed restriction zones are effective since April 16<sup>th</sup>, 2025, while the restricted area will be implemented based on whale presence.

A voluntary seasonal slowdown of 10.0 knots over the ground spanning from Cabot Strait (a line running from Cape North NS to Cape Ray NL) to the eastern edge of dynamic shipping zone E will be implemented at the beginning and end of the North Atlantic right whale season (Spring and fall).

Please check the latest NAVWARN for all speed restrictions currently in effect.

### **SPEED RESTRICTION MEASURES FOR 2025**

These restrictions are in effect from **April 16 to November 15, 2025.**

**Note: This is the third interim order for the 2025 North Atlantic Right Whale (NARW) season, which started on April 16<sup>th</sup>, during the 2025 federal election period. The first was signed for a 30-day period, to provide protection for the species, while meeting Caretaker Convention requirements. The second Interim Order extended the protective measures for 30 days to provide continuity while Cabinet is formed. The third interim order was signed to cover the remaining of the NARW season until November 15<sup>th</sup>, 2025.**

#### **Exceptions**

The following exception will apply to **all** measures:

- a) a vessel in distress or providing assistance to a person or a vessel in distress;
- b) a government vessel being used:
  - i) for law enforcement activities;
  - ii) for search and rescue operations; or

- iii) to ensure the competency of the crew or the operational readiness of the vessel or crew with respect to such activities or operations.

## STATIC ZONES

In the static zones, **all** vessels above **13 m** in length overall (LOA) must proceed at a speed of not more than 10.0 knots over the ground.

### Exclusions

Air cushion vessels operated by or on behalf of the Government of Canada that are engaged in ice-clearing activities from April to June in and around Chaleur Bay are exempted when in operation.

### 36.57 m (20-fathom) shallow water protocol exclusion

Vessels engaged in any commercial fishing activity may proceed at a safe operational speed in waters not more than 36.57 m (20 fathom) deep within the static zones.

If a notice to fish harvesters and a NAVWARN state that at least one North Atlantic right whale has been detected in waters within a static zone or its associated buffer zone that are not more than 36.57m deep, the speed limit of 10.0 knot over the ground will apply in the concerned zone(s) to all vessels above 13m in length overall (LOA). The speed restriction will be in effect for 15 days after the day on which the whale was detected. The buffer zones associated with the static zones are located 5 miles north and south of their adjacent border in waters less than 36.57m deep.

#### Coordinates for the northern static zone:

- 50° 20' N 065° 00' W
- 49° 13' N 065° 00' W
- 48° 40' N 064° 13' W
- 48° 40' N 062° 40' W
- 48° 03' N 061° 07.5' W
- 47° 58.1' N 061° 03.5' W
- 48° 00' N 061° 00' W
- 49° 04' N 061° 00' W
- 49° 04' N 062° 00' W
- 49° 43' N 063° 00' W
- 50° 20' N 063° 00' W

#### Coordinates for the southern static zone:

- 48° 40' N 065° 00' W
- 48° 40' N 062° 40' W
- 48° 03' N 061° 07.5' W
- 47° 58.1' N 061° 03.5' W
- 47° 10' N 062° 30' W
- 47° 10' N 065° 00' W

## DYNAMIC SHIPPING ZONES

There are five dynamic shipping zones (DSZ) located in the routing systems north and south of Anticosti Island: A, B, C, D and E

### Coordinates for the dynamic shipping zones:

#### Zone A

- 49° 41' N, 065° 00' W
- 49° 20' N, 065° 00' W
- 49° 11' N, 064° 00' W
- 49° 22' N, 064° 00' W

#### Zone B

- 49° 22' N, 064° 00' W
- 49° 11' N, 064° 00' W
- 48° 48' N, 063° 00' W
- 49° 00' N, 063° 00' W

#### Zone C

- 49° 00' N, 063° 00' W
- 48° 48' N, 063° 00' W
- 48° 24' N, 062° 00' W
- 48° 35' N, 062° 00' W



**Zone D**

- 50° 16' N, 064° 00' W
- 50° 00' N, 064° 00' W
- 49° 56' N, 063° 00' W
- 50° 16' N, 063° 00' W

**Zone E**

- 48° 35' N 062° 00' W
- 48° 24' N 062° 00' W
- 48° 03' N 061° 07.5' W
- 47° 58.1' N 061° 03.5' W
- 48° 00' N 061° 00' W
- 48° 10.5' N 061° 00' W

When a North Atlantic right whale is detected in a dynamic shipping zone or in the buffer zones, located 5 nautical miles south or 2.5 nautical miles from the eastern and western edges of the dynamic shipping zones:

- All vessels will be notified via a NAVWARN; and
- Vessels above **13 m** in length overall (LOA) must proceed at a speed of not more than 10.0 knots over the ground within that zone.

Even though dynamic shipping zones overlap with static zones, vessels can travel at a safe operational speed in dynamic shipping zones when they are not under speed restriction. Mariners must also keep in mind that North Atlantic right whales may be nearby.

**SPEED RESTRICTIONS IN THE DYNAMIC SHIPPING ZONES**

The detection of North Atlantic right whales in one or more dynamic shipping zone(s), or in their buffer zones, will trigger a speed restriction in the concerned zone(s). The speed restriction in the dynamic shipping zone(s) will be in effect for 15 days from the date of detection. In the event of a new North Atlantic right whale detection occurring in the last 7 days of the 15-day slowdown period, the speed restriction will be extended for an additional 15 days from the date of the new detection. This would continue until no NARW are detected.

When a NAVWARN is issued implementing a speed restriction in one or more dynamic shipping zone(s), vessels above **13 m** in length (LOA) must not exceed a speed of 10.0 knots over the ground. Within any dynamic zone that is not subject to a speed restriction, mariners may proceed at a safe operational speed. Mariners are encouraged to take into consideration the potential for their vessel striking North Atlantic right whales when considering a “safe operational speed” during navigation.

**SEASONAL MANAGEMENT AREAS**

Seasonal management area 1 (SMA-1) and seasonal management area 2 (SMA-2) are speed restriction areas located north and south of dynamic shipping zone E, respectively.

Within seasonal management areas, vessels above **13 m** in length (LOA):

- must restrict their speed so as not to exceed 10.0 knots over the ground from April 16th to June 24th, 2025; **and**
- are allowed to proceed at a safe operational speed from June 25<sup>th</sup> to November 15<sup>th</sup>, 2025, unless a North Atlantic right whale is detected. If a whale is detected, a speed restriction of 10.0 knots over the ground will be triggered for 15 days from the date of detection. In the event of a new North Atlantic right whale detection occurring in the last 7 days of the 15-day slowdown period, the speed restriction will be extended for an additional 15 days from the date of the new detection. This would continue until no North Atlantic right whales are detected.

**Coordinates for the SMA-1:**

- 49° 04' N 062° 00' W
- 49° 04' N 061° 00' W
- 48° 10.5' N 061° 00' W
- 48° 35' N 062° 00' W

**Coordinates for the SMA-2:**

- 48° 24' N 062° 00' W
- 48° 03' N 061° 07.5' W
- 47° 58.1' N 061° 03.5' W
- 47° 26.69' N 062° 00' W

**RESTRICTED AREA**

In the summer months, an important proportion of the total North Atlantic right whale population gathers for feeding and surface activity near the [Shediac Valley](#). Since this makes the North Atlantic right whale more susceptible to vessel collisions, a mandatory restricted area will be implemented in and near the Shediac Valley and will come into force once 80% of the restricted area is closed to fishing for the season as per the [Department of Fisheries and Oceans' right whale closure protocol](#) or at the latest on June 16<sup>th</sup>, 2025. The restricted area will be lifted on September 26, 2025, unless North Atlantic right whale detections are reported in high number, which would extend the restricted area beyond September 26.

The size and location of the area are determined based on historical detection data of North Atlantic right whales. All necessary details can be found in the *Interim Order No.3 for the Protection of North Atlantic Right Whales (Eubalaena Glacialis) in the Gulf of St. Lawrence, 2025*. Triggering and lifting of the restricted area will be communicated to mariners through NAVWARNs and notices to fish harvesters.

Vessels above **13 m** in length (LOA) will be required to:

- avoid the area unless they are part of the exceptions listed in the *Interim Order No.3 for the Protection of North Atlantic Right Whales (Eubalaena Glacialis) in the Gulf of St. Lawrence, 2025*;
- transit the area at a speed not exceeding 8.0 knots over the ground if they are part of the exceptions.

The following exceptions will apply to the restricted area. The following listed vessels can travel through the area at not more than 8.0 knots over the ground:

- A vessel being used for commercial fishing;
- A vessel being used for fishing under the authority of a licence issued under the *Aboriginal Communal Fishing Licences Regulations*;
- A vessel being used for research purposes on behalf of the Government of Canada
- A vessel being used as part of the Department of Fisheries and Oceans' Marine Mammal Response Program to assist a marine mammal or sea turtle in distress or to access or retrieve a deceased marine mammal or sea turtle;
- A vessel authorized by the Government of Canada to retrieve or identify the location of abandoned or lost fishing gear;
- A vessel involved in pollution response operations;
- A vessel avoiding immediate or unforeseen danger;
- A vessel involved in research relating to right whales as part of a project that has received funding from the Government of Canada.

The following vessels can travel through the restricted area at a speed over 8.0 knots, but below 10.0 knots over the ground as required by the static speed restriction zone:

- A vessel being used by an employee of the Government of Canada or peace officer who is performing their duties.



**Coordinates for the restricted area:**

- 48°31.8' N 063°39.6' W
- 48°24.72' N 063°17.88' W
- 47°18.84' N 064°10.8' W
- 47°27.18' N 064°30.72' W

**Inclement weather exception**

Mariners will be notified in advance via a NAVWARN should the speed restriction status change in any zone or area, due to inclement weather.

Within any zone or area that is no longer subject to a speed restriction due to adverse weather conditions, mariners may proceed at a safe operational speed. Mariners are however encouraged to take into consideration the potential for their vessel striking North Atlantic right whales when considering a “safe operational speed” during navigation.

\*Non-excepted vessels are still prohibited from transiting through the restricted area.

**VOLUNTARY SEASONAL SLOWDOWN IN CABOT STRAIT**

To coincide with the North Atlantic right whales entering and exiting the Gulf of St. Lawrence in large numbers, a voluntary seasonal slowdown is being put in place in Cabot Strait from April 16<sup>th</sup> to June 24<sup>th</sup>, 2025, and from September 3<sup>rd</sup> to November 15<sup>th</sup>, 2025.

- During these periods, vessels above 13 m in length (LOA) are requested to voluntarily reduce their speed as to not exceed 10.0 knots over the ground.

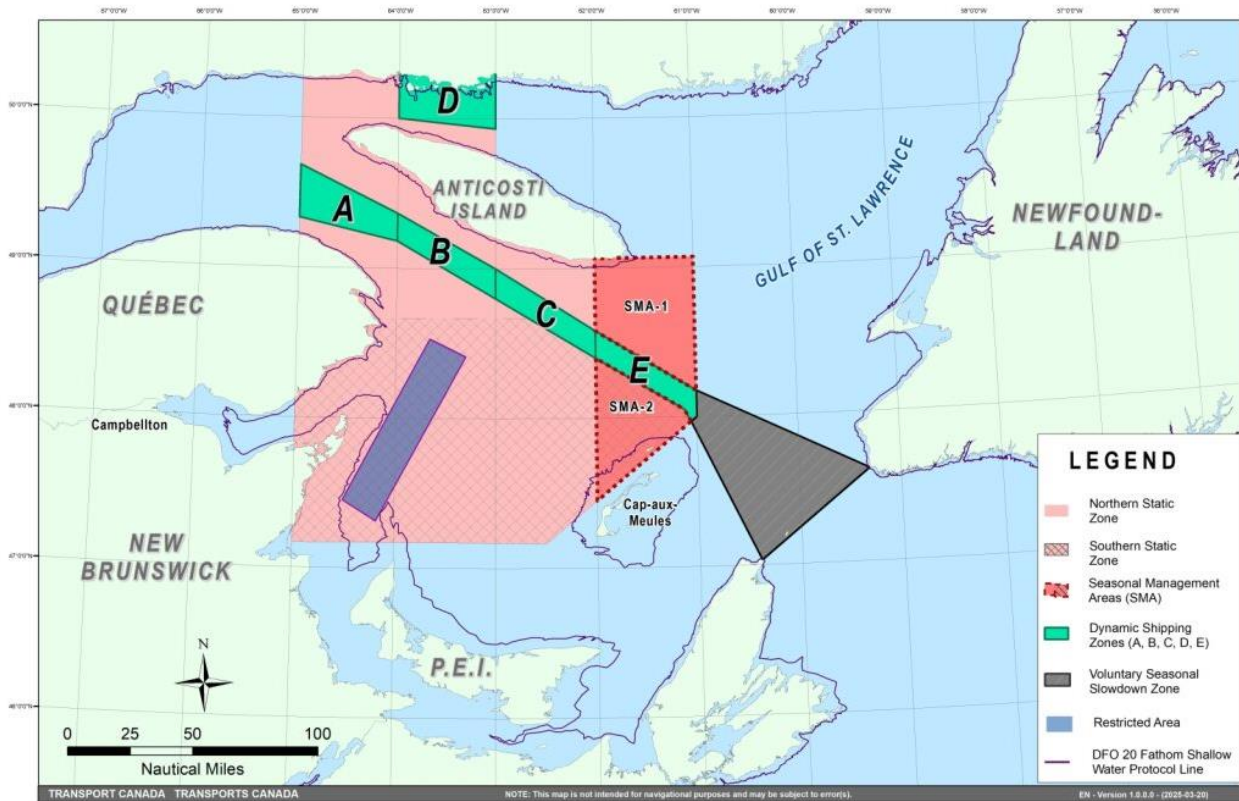
**Voluntary seasonal slowdown zone coordinates:**

- 48° 10.5' N 061° 00' W
- 47° 37.2' N 059° 18.5' W
- 47° 02' N 060° 23.7' W
- 47° 58.1' N 061° 03.5' W
- 48° 00' N 061° 00' W

**Map of the Gulf of St. Lawrence**

The following map shows

- the static zones (north and south), in pink;
- the dynamic shipping zones (A, B, C, D and E), in green;
- the seasonal management areas, in dark pink;
- the voluntary seasonal slowdown zone, in grey;
- the restricted area, in dark blue; and
- the 36.57 m (20 fathom) shallow water protocol line.



This map is for visual representation only and is not to be used for navigation or enforcement.

### ROSEWAY BASIN – AREA TO BE AVOIDED

The Roseway Basin, located approximately 20 nautical miles south of Cape Sable Island, Nova Scotia, is a critical habitat for North Atlantic right whales, which have been observed to gather in the area on a seasonal basis in Canadian waters. This critical habitat is also located near key shipping routes. In 2007, Canada, with the support of many groups with varied interests, proposed to the International Maritime Organization (IMO) the establishment of a seasonal Area to be Avoided in the Roseway Basin to protect North Atlantic right whales, which IMO accepted and adopted.

To reduce the risk of vessels colliding with North Atlantic right whales, it is recommended that vessels of 300 gross tonnages and more, in transit during the period of June 1 through December 31, avoid the Roseway Basin area. Smaller vessels are also encouraged to avoid passage through this area. If passage is necessary within the Area to be Avoided, it is recommended that all mariners decrease their vessel speed to no more than 10 knots, when safe to do so.

#### Roseway Basin coordinates:

- 43° 16' N 064° 55' W
- 42° 47' N 064° 59' W
- 42° 39' N 065° 31' W
- 42° 52' N 066° 05' W

## **BAY OF FUNDY – VOLUNTARY SLOWDOWN**

The Grand Manan Basin located in the Bay of Fundy is identified as a critical habitat for the North Atlantic right whale. When North Atlantic right whales are detected in the Bay of Fundy shipping lanes and near the Grand Manan Basin area, the Fundy Traffic will ask vessels to voluntarily slowdown to 10 knots via VHF channel 12 or 14 at corresponding Calling-in-Points.

## **NAVWARN BROADCASTS**

The Canadian Coast Guard issues NAVWARNs:

- by radio broadcast; and
- online at [Canada's Maritime Information Portal](#) and its [Navigational Warnings](#) site, using the [North Atlantic Right Whale](#) category.

Mariners must ensure they have accurate and up-to-date information about the protection of the North Atlantic right whale, as in all applicable NOTMARs and NAVWARNs.

For the North Atlantic right whale speed restrictions, the NAVWARN(s) currently in effect will be provided to vessels subject to the *Vessel Traffic Services Zone Regulations* or the *Eastern Canada Vessel Traffic Services Zone Regulations*:

### **Outbound vessels will receive NAVWARNs**

- at Calling-in-Point 10 (St-Laurent); or
- upon a departure downstream from the Quebec pilot station (including the Saguenay River, Chaleur Bay, Miramichi Bay, etc.)

### **Inbound vessels will receive NAVWARNs**

- when a clearance to enter Canadian waters is granted

### **Vessels in transit will receive NAVWARNs**

- at the last reporting point prior to entering the mandatory speed restriction zones; and/or
- at 10 nautical miles before they enter the mandatory speed restriction zones

For those vessels not subject to the above-mentioned regulations, vessel operators are required to monitor broadcasts by the Canadian Coast Guard's Marine Communications and Traffic Services network for the most up to date information. For marine radio frequencies and broadcast times, information may be found in the [Radio Aids to Marine Navigation](#) publication.

## **AIDS TO NAVIGATION**

The Canadian Coast Guard broadcasts virtual Automatic Identification System (AIS) aids to navigation (AIS AtoN) in specific areas. These aids may notify mariners of dynamic shipping zones and/or seasonal management areas subject to speed restrictions.

Each zone is delimited by four to six virtual AIS AtoN, which can be displayed on a ship's navigation equipment, such as

- Electronic Chart Display and Information System (ECDIS);
- Electronic Chart System (ECS);
- RADAR;
- Minimum Keyboard Display (MKD); and
- Electronic Nautical Chart (ENC).

The Canadian Coast Guard broadcasts the virtual AIS AtoN only when a speed restriction is in effect in one or more testing zones.

Mariners must select the virtual AIS AtoN symbol to view a message such as “SectA1 Spd Lim 10 kt.” This message refers to a speed restriction in effect for a specific zone.

Note: This system is not the primary method of communicating this information.

## COMPLIANCE AND ENFORCEMENT

Vessels must comply with the Interim Orders made pursuant to the *Canada Shipping Act, 2001*, and any NAVWARNs broadcasted and published by the Canadian Coast Guard relating to the Interim Orders, aimed at regulating the navigation for the purposes of protecting the North Atlantic right whales.

If a vessel does not comply with the Interim Orders or instructions in the NAVWARNs related to the Interim Orders, the vessel could face:

- administrative monetary penalties up to a maximum of CAN \$250,000; and/or
- penal sanctions under the *Canada Shipping Act, 2001* is liable on summary conviction to a fine of not more than CAN \$1,000,000 or to imprisonment for a term of not more than 18 months, or to both.

If a vessel appears to have violated the speed restriction, Transport Canada Marine Safety inspectors will review all information provided through AIS and seek an explanation from the master.

No exemptions to the speed restriction will be granted in advance. However, if a deviation from the speed restrictions is necessary for safety reasons, the following information must be entered into the bridge logbook:

- reason(s) for deviation;
- speed at which vessel is operated;
- latitude and longitude at time of deviation;
- time and duration of deviation; and
- master of the vessel shall sign and date the bridge logbook entry.

For any deviation, Transport Canada will review and consider reasons such as:

- navigating to ensure vessel safety;
- weather conditions;
- force majeure (unforeseeable circumstances); and
- responding to emergencies.

## REPORT A NORTH ATLANTIC RIGHT WHALE SIGHTING

If you see **live, free-swimming whales**:

- **Email:** [DFO.GLFWholes-BaleinesGLF.MPO@dfo-mpo.gc.ca](mailto:DFO.GLFWholes-BaleinesGLF.MPO@dfo-mpo.gc.ca)
- When reporting sightings of North Atlantic right whales, you must include: GPS location (latitude and longitude), date and time of sighting, number of marine mammals, **photograph(s)/video(s) collected** and if possible, behavior of marine mammals observed (ex., feeding, travelling, diving).

## SIGHTINGS OF ENTANGLED, INJURED OR DEAD NORTH ATLANTIC RIGHT WHALE

If you see a North Atlantic right whale (and all other marine mammals) **entangled, injured or dead**, please document and report it immediately to the regional Response Network.

- When documenting you should collect: GPS location (latitude and longitude), date and time of sighting, number of marine mammals, photograph(s)/video(s), and description of the incident to provide to the Response Network.

**Southern part of the Gulf of St. Lawrence (New Brunswick, Nova Scotia & Prince Edward Island)**

Marine Animal Response Society  
Telephone: 1-866-567-6277

**Newfoundland and Labrador**

Whale Release and Strandings Newfoundland and Labrador (Tangly Whales Inc.)  
Telephone: 1-888-895-3003 or 1-709-895-3003

**Québec**

Réseau québécois d'urgences pour les mammifères marins (RQUMM)  
Telephone: 1-877-722-5346

**Report a marine mammal or sea turtle incident or sighting:**

Visit the website for more information on [reporting other marine mammal or sea turtle sighting](#) and incidents.

Please consult [Whale Insight](#) for the latest right whale observations.

**\*701/25 Canadian Hydrographic Service – Nautical Charts**

Charts	Main Title	Scale	Edition Date	Published	Cat#	Price
<b>New Editions</b>						
1314	Donnacona à/to Batiscan	1:40 000	2025-06-06	2025-07-04	1	\$20.00

**\*702/25 Canadian Hydrographic Service – Electronic Navigational Charts**

S-57 ENC Number	Chart Title	ENC Compilation Scale	Published
<b>New Charts</b>			
CA52XJKA (Edn 1.000)	CA52XJKA	1:2 000	2025-07-11
CA52YJKA (Edn 1.000)	CA52YJKA	1:2 000	2025-07-11
CA531JJA (Edn 1.000)	CA531JJA	1:2 000	2025-07-11
CA531JKA (Edn 1.000)	CA531JKA	1:2 000	2025-07-11
CA531JLA (Edn 1.000)	CA531JLA	1:2 000	2025-07-11
CA531JMA (Edn 1.000)	CA531JMA	1:2 000	2025-07-11
CA533JSA (Edn 1.000)	CA533JSA	1:2 000	2025-07-11
CA537K0A (Edn 1.000)	CA537K0A	1:2 000	2025-07-11
CA537K4A (Edn 1.000)	CA537K4A	1:2 000	2025-07-11
CA538KAA (Edn 1.000)	CA538KAA	1:2 000	2025-07-11
CA538KBA (Edn 1.000)	CA538KBA	1:2 000	2025-07-11
CA538KCA (Edn 1.000)	CA538KCA	1:2 000	2025-07-11
CA539KCA (Edn 1.000)	CA539KCA	1:6 000	2025-07-11
CA53MLDA (Edn 1.000)	Port4400N07670W	1:6 000	2025-07-18
CA53MLEA (Edn 1.000)	Port4400N07660W	1:6 000	2025-07-18

S-57 ENC Number	Chart Title	ENC Compilation Scale	Published
CA53MLFA (Edn 1.000)	Port4400N07650W	1:6 000	2025-07-18
CA53NLDA (Edn 1.000)	Port4410N07670W	1:6 000	2025-07-18
CA53NLEA (Edn 1.000)	Port4410N07660W	1:6 000	2025-07-18
CA53NLFA (Edn 1.000)	Port4410N07650W	1:6 000	2025-07-18
CA53PLDA (Edn 1.000)	Port4420N07670W	1:6 000	2025-07-18
CA53PLEA (Edn 1.000)	Port4420N07660W	1:6 000	2025-07-18
CA53PLFA (Edn 1.000)	Port4420N07650W	1:6 000	2025-07-18
CA54CQKA (Edn 1.000)	CA54CQKA	1:6 000	2025-07-11
CA571542 (Edn 1.000)	CA571542	1:11 000	2025-07-04
CA571545 (Edn 1.000)	CA571545	1:11 000	2025-07-04
CA571546 (Edn 1.000)	CA571546	1:11 000	2025-07-04
CA571547 (Edn 1.000)	CA571547	1:11 000	2025-07-04
CA571548 (Edn 1.000)	CA571548	1:11 000	2025-07-04
CA571549 (Edn 1.000)	CA571549	1:11 000	2025-07-04
CA571550 (Edn 1.000)	CA571550	1:11 000	2025-07-04
CA571551 (Edn 1.000)	CA571551	1:11 000	2025-07-04
CA571552 (Edn 1.000)	CA571552	1:11 000	2025-07-04
CA571553 (Edn 1.000)	CA571553	1:11 000	2025-07-04
CA571554 (Edn 1.000)	CA571554	1:11 000	2025-07-04
CA571555 (Edn 1.000)	CA571555	1:11 000	2025-07-04
CA571556 (Edn 1.000)	CA571556	1:11 000	2025-07-04
CA571557 (Edn 1.000)	CA571557	1:11 000	2025-07-04
CA571558 (Edn 1.000)	CA571558	1:11 000	2025-07-04
CA571559 (Edn 1.000)	CA571559	1:11 000	2025-07-04
CA571560 (Edn 1.000)	CA571560	1:11 000	2025-07-04
CA571561 (Edn 1.000)	CA571561	1:11 000	2025-07-04
CA571580 (Edn 1.000)	CA571580	1:11 000	2025-07-18
CA571581 (Edn 1.000)	CA571581	1:11 000	2025-07-18
CA571582 (Edn 1.000)	CA571582	1:11 000	2025-07-18
CA571583 (Edn 1.000)	CA571583	1:11 000	2025-07-18
CA571584 (Edn 1.000)	CA571584	1:11 000	2025-07-18
<b>New Editions</b>			
CA43XM7A (Edn 3.000)	Transit4500N07400W	1:11 000	2025-07-11
CA448M7A (Edn 3.000)	Transit4600N07400W	1:11 000	2025-07-25
CA448MHA (Edn 4.000)	Transit4600N07300W	1:11 000	2025-07-11
CA448N4A (Edn 3.000)	Transit4600N07100W	1:22 500	2025-07-18
CA44JN4A (Edn 4.000)	Transit4700N07100W	1:22 500	2025-07-18
CA44JS2A (Edn 2.000)	CA44JS2A	1:45 000	2025-07-04

S-57 ENC Number	Chart Title	ENC Compilation Scale	Published
CA44JS2B (Edn 2.000)	CA44JS2B	1:45 000	2025-07-04
CA44JSCA (Edn 2.000)	CA44JSCA	1:45 000	2025-07-04
CA471219 (Edn 2.000)	CA471219	1:22 500	2025-07-18
CA542M9A (Edn 3.000)	Port4540N07380W	1:6 000	2025-07-25
CA542MAA (Edn 2.000)	Port4540N07370W	1:6 000	2025-07-11
CA542MCA (Edn 3.000)	Port4540N07350W	1:6 000	2025-07-25
CA543MBA (Edn 2.000)	Port4550N07360W	1:6 000	2025-07-18
CA543MCA (Edn 3.000)	Port4550N07350W	1:6 000	2025-07-11
CA544MBA (Edn 2.000)	Port4560N07360W	1:6 000	2025-07-11
CA544MCA (Edn 2.000)	Port4560N07350W	1:6 000	2025-07-11
CA545MBA (Edn 2.000)	Port4570N07360W	1:6 000	2025-07-11
CA545MCA (Edn 2.000)	Port4570N07350W	1:6 000	2025-07-11
CA545MDA (Edn 2.000)	Port4570N07340W	1:2 000	2025-07-11
CA546MDA (Edn 2.000)	Port4580N07340W	1:4 000	2025-07-11
CA546MEA (Edn 2.000)	Port4580N07330W	1:4 000	2025-07-11
CA547MFA (Edn 2.000)	Port4590N07320W	1:6 000	2025-07-11
CA548MFA (Edn 2.000)	Port4600N07320W	1:4 000	2025-07-11
CA548MGA (Edn 2.000)	Port4600N07310W	1:4 000	2025-07-11
CA54AMLA (Edn 2.000)	Port4620N07270W	1:2 000	2025-07-11
CA54CMPA (Edn 2.000)	Port4640N07240W	1:6 000	2025-07-11
CA556PHA (Edn 2.000)	Port4910N06640W	1:2 000	2025-07-04
CA55XSSA (Edn 4.000)	CA55XSSA	1:11 000	2025-07-04
<b>Charts Permanently Withdrawn</b>			
CA570008	Montague Harbour		
CA570088	Tofino		
CA570155	Osborn Bay	Cancelled by CA571545	
CA570186	Bedwell Harbour to/à Georgeson Passage	Cancelled by CA571549	
CA570237	Sansum Narrows	Cancelled by CA571555	
CA570238	Fulford Harbour	Cancelled by CA571554	
CA573105	Port Burwell	Cancelled by CA537K4A	
CA573118	Kingston Harbour and Approaches/et les approches		
CA573303	Port Dover		
CA573306	Nanticoke Harbour		
CA573312	Wheatley Harbour	Cancelled by CA531JMA	
CA573314	Kingsville Harbour	Cancelled by CA531JJA	
CA573315	Leamington Harbour		
CA573316	Port Stanley	Cancelled by CA537K0A	



S-57 ENC Number	Chart Title	ENC Compilation Scale	Published
CA573327	Erieau - Entrance to Rondeau Bay	Cancelled by CA533JSA	
CA670734	Crofton	Cancelled by CA571545	
CA673443	Scudder	Cancelled by CA52YJKA	
CA673444	Westdock	Cancelled by CA52XJKA	

**\*703/25 Transport Canada - Ship Safety Bulletins #10, #11, #12 and #13/2025**

New **Ship Safety Bulletins** have recently been posted on the [Transport Canada website](#).

To view or download these bulletins, please click on the links below:

**[SSB#10/2025](#) – Now in force: Discharge requirements for cruise ships**  
**RDIMS# 21020637**

**[SSB#11/2025](#) – 2025 Passenger vessel concentrated inspection campaign**  
**RDIMS# 20970648**

**[SSB#12/2025](#) – Difficulties and best practices for detecting radar search and rescue transponders (SARTs)**

**[SSB#13/2025](#) – Implementation of the International Maritime Organization's (IMO) Prohibition on the use and carriage for use as fuel of heavy fuel oil (HFO) by ships in Canadian Arctic waters**

Sign up for [e-Bulletin](#) to receive an e-mail notice each time a new Ship Safety Bulletin is published on our website.

**Contact us at** [marinesafety-securitemaritime@tc.gc.ca](mailto:marinesafety-securitemaritime@tc.gc.ca) or 1-855-859-3123 (Toll Free).

**\*704/25 Plans Baie des Chaleurs / Chaleur Bay - Côte sud / South Shore – Unlit Buoys Permanently Changed**

Reference chart: 4920

The following unlit buoys have been changed permanently:

Aid Name	LL #	Position	Changes
Shippegan Gully buoy TJ39	6260.1	47° 43' 53.5"N 064° 40' 13.4"W	Repositioned.
Shippegan Gully buoy TJ44	6261.2	47° 44' 01.5"N 064° 40' 24.6"W	Repositioned.
Shippegan Gully buoy TJ52	6261.51	47° 44' 11.1"N 064° 40' 54.6"W	Unlit starboard buoy established.
Shippegan Gully buoy TJ50	6261.7	47° 44' 09.1"N 064° 40' 47.5"W	Repositioned.
Shippegan Gully buoy TJ54	6261.8	47° 44' 20.2"N 064° 41' 04.1"W	Repositioned.
Shippegan Gully buoy TJ63	6261.82	47° 44' 35.8"N 064° 41' 32.4"W	Repositioned.

(G2025-093 to 098)



**\*705/25 Grindstone Point to/à Berens River – Unlit Buoys Repositioned**

Reference chart: 6267

The following unlit buoys have been repositioned to the following coordinates:

Aid Name	LL #	Position
Bloodvein River buoy DE7	9624	51° 47' 25.3"N 096° 44' 15.5"W
Bloodvein River buoy DE9	9626	51° 47' 23.1"N 096° 43' 53.8"W

(P2025-025, 026)

## Section 1A: Temporary and Preliminary Notices

### Reminder – Comment Period for Active Preliminary Notices

This is a reminder that the comment period is still open for the following active Preliminary notices:

Notice #	Reference Chart #	Aids Affected (LL #)	Intent of Notice
<b>Newfoundland and Labrador Coast</b>			
<a href="#">606(P)/25</a>	4679	211.81	Aid to Navigation to be Discontinued
<b>Inland Waters</b>			
<a href="#">517(P)/25</a>	1430	1194, 1195	Range Lights to be Abandoned
<b>Other Preliminary Notices</b>			
<a href="#">519(P)/25</a>	3625	N/A	Paper Chart to be Discontinued

Please refer to the [Notices to Mariners - Monthly Summary of Temporary and Preliminary Notices](#) publication for details.

### Newfoundland and Labrador Coast

#### Temporary Notices

#### \*707/25 Head of / Fond de Placentia Bay – Subsurface Moorings Removed

Reference: Notice 510(T)/25 is cancelled (Chart 4839).

The inshore subsurface moorings have been removed.

#### Preliminary Notices

No notices applicable for this edition.

### Atlantic Coast

#### Temporary Notices

No notices applicable for this edition.

## Preliminary Notices

### Atlantic Region

#### Comment Submission

Comments on proposed changes in preliminary (P) notices are solicited from mariners and other interested parties within three months of the initial publication date. Following this date, the notices will be cancelled. Any objections raised must state the facts on which they are based and should include supporting information on safety, commerce and public benefit.

Comments should be directed to the following:

Superintendent,  
Aids to Navigation & Waterways  
Canadian Coast Guard, Atlantic Region  
P.O. Box 1000  
50 Discovery Drive  
Dartmouth, NS B2Y 3Z8  
Telephone: (506) 636-4708  
Email: [DFO.CCGATLAidstoNavDiscont-AidesalanavSupprATLGCC.MPO@dfo-mpo.gc.ca](mailto:DFO.CCGATLAidstoNavDiscont-AidesalanavSupprATLGCC.MPO@dfo-mpo.gc.ca)

### **\*708(P)/25 St. Marys Bay – Fog Signal to be Discontinued**

Reference chart: 4118

The Canadian Coast Guard proposes to permanently discontinue the fog signal from the following aid to navigation:

Aid Name	LL #	Position
Cape St. Marys	241	44° 05' 09.2"N 066° 12' 39.6"W

The light and structure are to remain.

Initial publication date: Friday, July 25, 2025

[Comment submission deadline](#): Thursday, October 30, 2025

(F2025-010)

### **Central Region: St. Lawrence Sector**

#### Comment Submission

Comments on proposed changes in preliminary (P) notices are solicited from mariners and other interested parties within three months of the initial publication date. Following this date, the notices will be cancelled. Any objections raised must state the facts on which they are based and should include supporting information on safety, commerce and public benefit.

Comments should be directed to the following:

Superintendent  
Aids to Navigation & Waterways  
Canadian Coast Guard, Central Region  
1550 D'Estimauville Avenue  
Québec, QC G1J 5E9  
Telephone: (418) 648-7450  
Emails:  
St. Lawrence Region: [DFO.AtoNStLawrence-StLaurentAalaN.MPO@dfo-mpo.gc.ca](mailto:DFO.AtoNStLawrence-StLaurentAalaN.MPO@dfo-mpo.gc.ca)  
Great Lakes Region:  
[DFO.CCGCentralAtoNGreatLakes-GrandsLacsAalaNCentreGCC.MPO@dfo-mpo.gc.ca](mailto:DFO.CCGCentralAtoNGreatLakes-GrandsLacsAalaNCentreGCC.MPO@dfo-mpo.gc.ca)

**\*709(P)/25 Sault-au-Cochon à/to Québec – Aid to Navigation to be Abandoned**

Reference chart: 1317

The Canadian Coast Guard proposes to permanently abandon the following aid to navigation:

Aid Name	LL #	Position
Saint-François	1913	46° 59' 47.6"N 070° 48' 29.5"W

Initial publication date: Friday, July 25, 2025

[Comment submission deadline](#): Thursday, October 30, 2025

(Q2025-053)

**Inland Waters**

**Temporary Notices**

**\*710(T)/25 Hamilton Harbour – Waterway Information: Shallow Depth Reported**

Reference chart: 2067

Vessels transiting the East end of Hamilton Harbour are to use caution as the following area is not seaway draft.

43° 16.315'N 079° 47.353'W

43° 16.323'N 079° 47.324'W

43° 16.297'N 079° 47.263'W

43° 16.278'N 079° 47.336'W

Mariners are to call the harbour masters office at 1 (905) 525-3412 for the most recent soundings.

(NW-C-3449-24)

**\*711(T)/25 Port of Thunder Bay – Obstruction: Submerged Object**

Reference chart: 2314

Lost anchor reported in the vicinity of 48° 25.817'N 089° 09.633'W.

(NW-C-0603-25)

**\*712(T)/25 Whiskey Jack Island to/à Red Deer River – Waterway Information: Shallow Depth Reported**

Reference chart: 6274

Shallower depth of 90 centimetres located at 52° 58.444'N 100° 58.654'W.

(NW-C-1757-23)

**\*713(T)/25 Lake Manitoba / Lac Manitoba (Southern Portion / Partie sud) – Waterway  
Information: Shallow Depth Reported**

Reference chart: 6505

Shallower depth of 78 centimetres located at 50° 41.927'N 098° 42.258'W.

(NW-C-1756-23)

---

**Preliminary Notices**

---

No notices applicable for this edition.

## Section 2: Chart Corrections

### 1439 - Carleton Island to/au Charity Shoal - New Edition - 30-SEP-2020 - World Geodetic System 1984

11-JUL-2025

LNM/D. 09-MAY-2025

Affix	patch	joining 44°12'25.0"N 076°27'29.3"W 44°11'23.2"N 076°27'01.0"W 44°11'23.2"N 076°25'56.5"W 44°12'39.2"N 076°25'56.5"W 44°12'39.2"N 076°27'29.3"W and 44°12'25.0"N 076°27'29.3"W
Download Patch - <a href="https://www.notmar.gc.ca/chsftp/patches/1439_6605515_1_202506231008.pdf">https://www.notmar.gc.ca/chsftp/patches/1439_6605515_1_202506231008.pdf</a>		
DFO(6605515-01)		

### 1513 - Narrows Lock to/à Newboro - Sheet/Feuille 2 - New Edition - 05-JAN-2007 - NAD 1983

25-JUL-2025

LNM/D. 24-MAY-2024

Add	private green port hand spar buoy, marked SW1 (See Chart 1, Qc)	44°40'39.6"N 076°23'26.4"W  DFO(6605531-01)
Add	private red starboard hand spar buoy, marked SW2 (See Chart 1, Qb)	44°40'40.5"N 076°23'26.2"W  DFO(6605531-02)
Add	private red starboard hand spar buoy, marked SW4 (See Chart 1, Qb)	44°40'40.2"N 076°23'28.4"W  DFO(6605531-03)
Add	private green port hand spar buoy, marked SW5 (See Chart 1, Qc)	44°40'39.4"N 076°23'30.3"W  DFO(6605531-04)
Add	private red starboard hand spar buoy, marked SW6 (See Chart 1, Qb)	44°40'40.0"N 076°23'30.3"W  DFO(6605531-05)
Add	private red starboard hand spar buoy, marked SW8 (See Chart 1, Qb)	44°40'39.7"N 076°23'32.3"W  DFO(6605531-06)
Add	private green port hand spar buoy, marked SW9 (See Chart 1, Qc)	44°40'38.9"N 076°23'35.8"W  DFO(6605531-07)
Add	private red starboard hand spar buoy, marked SW10 (See Chart 1, Qb)	44°40'42.2"N 076°23'32.5"W  DFO(6605531-08)

### 2017 - Kingston Harbour and Approaches/et les approches - New Edition - 15-JUL-2020 - World Geodetic System 1984

11-JUL-2025

LNM/D. 09-MAY-2025

Affix	patch	joining 44°12'32.3"N 076°27'26.5"W 44°11'35.9"N 076°27'26.5"W 44°11'35.9"N 076°25'58.0"W 44°12'32.3"N 076°25'58.0"W and 44°12'32.3"N 076°27'26.5"W
Download Patch - <a href="https://www.notmar.gc.ca/chsftp/patches/2017_6605515_2_202506231020.pdf">https://www.notmar.gc.ca/chsftp/patches/2017_6605515_2_202506231020.pdf</a>		
DFO(6605515-02)		

**2020 - Belleville to/à Presqu'île Bay - New Chart - 02-JUL-2021 - World Geodetic System 1984**

18-JUL-2025

LNMD. 23-MAY-2025

- Delete light marked, Iso W 2s9m with leading line and bearing 295° 44°01'07.2"N 077°43'16.1"W  
(See Chart 1, P20.2, Pa)  
This notice affects Electronic Navigational Chart: CA373234, CA473495  
(B2025022) LL(487) DFO(6605522-01)
- Add sector light with alternating boundaries F RG Iso W 2s visible through an arc of 5.5°, red from 295.3° to 297.8°, white from 294.8° to 295.3°, and green from 292.3° to 294.8° 44°01'07.2"N 077°43'16.1"W  
(See Chart 1, P40.1)  
This notice affects Electronic Navigational Chart: CA373234, CA473495  
(B2025022) LL(487) DFO(6605522-02)

**2021 - Murray Canal Presqu'île Bay to/à Trenton - Sheet/Feuille 1 - New Edition - 02-FEB-2007 - NAD 1983**

18-JUL-2025

LNMD. 23-MAY-2025

- Delete light marked, Iso 2s 30ft with leading line and bearing 295° 44°01'07.2"N 077°43'16.1"W  
(See Chart 1, P20.2, Pa)  
This notice affects Electronic Navigational Chart: CA373234, CA473495  
(B2025022) LL(487) DFO(6605522-01)
- Add sector light with alternating boundaries F RG Iso W 2s visible through an arc of 5.5°, red from 295.3° to 297.8°, white from 294.8° to 295.3°, and green from 292.3° to 294.8° 44°01'07.2"N 077°43'16.1"W  
(See Chart 1, P40.1)  
This notice affects Electronic Navigational Chart: CA373234, CA473495  
(B2025022) LL(487) DFO(6605522-02)

**2059 - Scotch Bonnet Island to/à Cobourg - New Chart - 31-JUL-1998 - NAD 1983**

18-JUL-2025

LNMD. 23-MAY-2025

- Delete light marked, Iso 2s9m with leading line and bearing 295° 44°01'07.2"N 077°43'16.1"W  
(See Chart 1, P20.2, Pa)  
This notice affects Electronic Navigational Chart: CA373234, CA473495  
(B2025022) LL(487) DFO(6605522-01)
- Add sector light with alternating boundaries F RG Iso W 2s visible through an arc of 5.5°, red from 295.3° to 297.8°, white from 294.8° to 295.3°, and green from 292.3° to 294.8° 44°01'07.2"N 077°43'16.1"W  
(See Chart 1, P40.1)  
This notice affects Electronic Navigational Chart: CA373234, CA473495  
(B2025022) LL(487) DFO(6605522-02)

**4011 - Approaches to / Approches à Bay of Fundy / Baie de Fundy - New Edition - 03-JAN-2003 - NAD 1983**

11-JUL-2025

LNMD. 21-FEB-2025

- Amend FI to read LFI 6s against light 45°07'11.1"N 066°20'50.8"W  
(See Chart 1, P16)  
(F2025007) LL(93) DFO(6311979-01)

**4116 - Approaches to / Approches à Saint John - New Edition - 31-AUG-2007 - NAD 1983**

11-JUL-2025

LNMD. 02-MAY-2025

- Amend FI 12s8M to read LFI 6s8M against light 45°07'06.8"N 066°20'51.5"W  
(See Chart 1, P16)  
(F2025007) LL(93) DFO(6311979-01)

**4202 - Halifax Harbour: Point Pleasant to / à Bedford Basin - New Edition - 26-FEB-2016 - NAD 1983**

04-JUL-2025

LNMD. 26-APR-2024

Delete	area under reclamation (2019) (See Chart 1, F31)	joining 44°38'52.1"N 063°34'13.1"W 44°38'52.7"N 063°34'10.6"W 44°38'57.7"N 063°34'13.0"W and 44°38'56.7"N 063°34'15.9"W <i>DFO(6311932-01)</i>
Delete	footbridge with legend 'Flo' (See Chart 1, D20.2)	between 44°38'57.7"N 063°34'13.0"W and 44°38'52.7"N 063°34'10.6"W <i>DFO(6311932-02)</i>
Add	depth of 6.8 metres (See Chart 1, I10)	44°38'56.7"N 063°34'13.6"W <i>DFO(6311932-03)</i>
Add	depth of 1.6 metres (See Chart 1, I10)	44°38'54.5"N 063°34'13.5"W <i>DFO(6311932-04)</i>
Add	depth of 2.7 metres (See Chart 1, I10)	44°38'53.3"N 063°34'12.4"W <i>DFO(6311932-05)</i>
Add	area under reclamation (2025) (See Chart 1, F31)	joining 44°37'55.3"N 063°33'59.9"W 44°37'52.1"N 063°33'58.4"W 44°37'55.8"N 063°33'42.0"W 44°37'59.0"N 063°33'43.3"W and 44°37'55.3"N 063°33'59.9"W <i>DFO(6311932-06)</i>

**4202 - Ocean Terminals - New Edition - 26-FEB-2016 - NAD 1983**

04-JUL-2025

LNMD. 26-APR-2024

Add	area under reclamation (2025) (See Chart 1, F31)	joining 44°37'55.3"N 063°33'59.9"W 44°37'52.1"N 063°33'58.4"W 44°37'55.8"N 063°33'42.0"W 44°37'59.0"N 063°33'43.3"W and 44°37'55.3"N 063°33'59.9"W <i>DFO(6311932-06)</i>
Delete	Pier/Môle A-1 designation of berth 33 (See Chart 1, F19.1)	44°37'58.8"N 063°33'47.3"W <i>DFO(6311932-07)</i>
Delete	Pier/Môle A-1 designation of berth 34 (See Chart 1, F19.1)	44°37'56.9"N 063°33'55.5"W <i>DFO(6311932-08)</i>
Delete	Pier/Môle B designation of berth 36 (See Chart 1, F19.1)	44°37'52.7"N 063°33'52.9"W <i>DFO(6311932-09)</i>
Delete	Pier/Môle B designation of berth 37 (See Chart 1, F19.1)	44°37'54.7"N 063°33'44.0"W <i>DFO(6311932-10)</i>



**4227 - Country Harbour to / au Ship Harbour - New Chart - 24-MAY-1991 - NAD 1983**

11-JUL-2025

LNMD. 25-APR-2025

Add	depth of 9.5 metres (See Chart 1, I10)	45°03'32.4"N 061°41'15.6"W <i>DFO(6311927-04)</i>
Replace	depth of 10.7 metres with depth of 8.9 metres (See Chart 1, I10)	45°04'47.3"N 061°41'11.8"W <i>DFO(6311927-20)</i>
Replace	depth of 4.6 metres with depth of 4.2 metres (See Chart 1, I10)	45°05'01.3"N 061°39'40.8"W <i>DFO(6311927-26)</i>
Add	depth of 9.7 metres (See Chart 1, I10)	45°04'59.9"N 061°38'41.8"W <i>DFO(6311927-31)</i>

**4234 - Country Island to / à Barren Island - New Chart - 10-APR-1987 - NAD 1983**

11-JUL-2025

LNMD. 25-APR-2025

Replace	depth of 8.5 metres with depth of 8 metres (See Chart 1, I10)	45°02'44.7"N 061°42'22.2"W <i>DFO(6311927-01)</i>
Replace	depth of 10.1 metres with depth of 9 metres (See Chart 1, I10)	45°02'52.6"N 061°42'22.9"W <i>DFO(6311927-02)</i>
Replace	depth of 10.1 metres with depth of 9.5 metres (See Chart 1, I10)	45°03'32.4"N 061°41'15.6"W <i>DFO(6311927-03)</i>
Replace	depth of 11.3 metres with depth of 9.1 metres (See Chart 1, I10)	45°05'02.5"N 061°43'23.2"W <i>DFO(6311927-05)</i>
Replace	depth of 10.7 metres with depth of 8.9 metres (See Chart 1, I10)	45°04'47.3"N 061°41'11.8"W <i>DFO(6311927-20)</i>
Replace	depth of 8.5 metres with depth of 7.8 metres (See Chart 1, I10)	45°05'11.6"N 061°41'06.0"W <i>DFO(6311927-21)</i>
Replace	depth of 10.1 metres with depth of 9.2 metres (See Chart 1, I10)	45°05'16.7"N 061°40'52.7"W <i>DFO(6311927-22)</i>
Add	depth of 7.8 metres (See Chart 1, I10)	45°05'16.4"N 061°40'26.5"W <i>DFO(6311927-24)</i>
Add	depth of 6.8 metres (See Chart 1, I10)	45°05'00.8"N 061°39'52.9"W <i>DFO(6311927-25)</i>
Replace	depth of 4.6 metres with depth of 4.2 metres (See Chart 1, I10)	45°05'01.3"N 061°39'40.8"W <i>DFO(6311927-26)</i>

Add	depth of 4.8 metres (See Chart 1, I10)	45°05'16.6"N 061°39'31.0"W <i>DFO(6311927-27)</i>
Add	depth of 4.6 metres (See Chart 1, I10)	45°05'15.2"N 061°39'05.4"W <i>DFO(6311927-28)</i>
Add	depth of 3.8 metres (See Chart 1, I10)	45°05'18.0"N 061°38'52.6"W <i>DFO(6311927-29)</i>
Add	depth of 9.1 metres (See Chart 1, I10)	45°05'00.6"N 061°39'11.1"W <i>DFO(6311927-30)</i>
Add	depth of 9.7 metres (See Chart 1, I10)	45°04'59.9"N 061°38'41.8"W <i>DFO(6311927-31)</i>
Delete	depth of 10.4 metres (See Chart 1, I10)	45°05'02.5"N 061°38'28.8"W <i>DFO(6311927-32)</i>
Add	depth of 9.1 metres (See Chart 1, I10)	45°05'01.7"N 061°38'10.8"W <i>DFO(6311927-33)</i>

**4234 - Port Bickerton - New Chart - 10-APR-1987 - NAD 1983**  
11-JUL-2025

		LNMD. 25-APR-2025
Delete	depth of 11.3 metres (See Chart 1, I10)	45°05'03.8"N 061°43'21.5"W <i>DFO(6311927-06)</i>
Add	depth of 9.1 metres (See Chart 1, I10)	45°05'02.8"N 061°43'23.5"W <i>DFO(6311927-07)</i>
Add	depth of 9.6 metres (See Chart 1, I10)	45°05'00.1"N 061°43'12.7"W <i>DFO(6311927-08)</i>
Add	depth of 9.4 metres (See Chart 1, I10)	45°05'05.1"N 061°43'13.4"W <i>DFO(6311927-09)</i>
Replace	depth of 7.6 metres with depth of 7 metres (See Chart 1, I10)	45°05'09.6"N 061°42'57.1"W <i>DFO(6311927-10)</i>
Add	depth of 9 metres (See Chart 1, I10)	45°05'07.0"N 061°42'53.0"W <i>DFO(6311927-11)</i>
Add	depth of 9.4 metres (See Chart 1, I10)	45°04'34.8"N 061°42'47.9"W <i>DFO(6311927-12)</i>

Delete	depth of 11 metres (See Chart 1, I10)	45°04'51.5"N 061°42'42.8"W <i>DFO(6311927-13)</i>
Add	depth of 10.9 metres (See Chart 1, I10)	45°04'49.3"N 061°42'38.7"W <i>DFO(6311927-14)</i>
Add	depth of 12.6 metres (See Chart 1, I10)	45°04'49.0"N 061°42'16.3"W <i>DFO(6311927-15)</i>
Replace	depth of 14 metres with depth of 13.6 metres (See Chart 1, I10)	45°04'56.9"N 061°41'32.6"W <i>DFO(6311927-17)</i>
Add	depth of 8.8 metres (See Chart 1, I10)	45°05'14.4"N 061°41'33.0"W <i>DFO(6311927-18)</i>
Add	depth of 7.4 metres (See Chart 1, I10)	45°05'19.8"N 061°41'25.7"W <i>DFO(6311927-19)</i>

**4237 - Approaches to / Approches de Halifax Harbour - New Edition - 28-MAY-2021 - World Geodetic System 1984**

04-JUL-2025

LNMD. 28-MAR-2025

Delete	area under reclamation (See Chart 1, F31)	joining 44°38'52.1"N 063°34'13.1"W 44°38'52.7"N 063°34'10.6"W 44°38'57.7"N 063°34'13.0"W and 44°38'56.7"N 063°34'15.9"W <i>DFO(6311932-01)</i>
Delete	footbridge (See Chart 1, D20.2)	between 44°38'57.7"N 063°34'12.8"W and 44°38'52.9"N 063°34'10.4"W <i>DFO(6311932-02)</i>
Add	area under reclamation (See Chart 1, F31)	joining 44°37'55.3"N 063°33'59.9"W 44°37'52.1"N 063°33'58.4"W 44°37'55.8"N 063°33'42.0"W 44°37'59.0"N 063°33'43.3"W and 44°37'55.3"N 063°33'59.9"W <i>DFO(6311932-06)</i>

**4320 - Egg Island to / à West Ironbound Island - New Edition - 26-SEP-1997 - NAD 1983**

25-JUL-2025

LNMD. 21-JUN-2024

Amend	'Taylor I' to read 'Dover I'	44°28'44.5"N 063°52'22.4"W <i>DFO(6312012-01)</i>
-------	------------------------------	--

**4321 - Cape Canso to / à Liscomb Island - New Edition - 08-OCT-2004 - NAD 1983**

11-JUL-2025

LNMD. 25-APR-2025

Replace	depth of 8.5 metres with depth of 8 metres (See Chart 1, I10)	45°02'44.7"N 061°42'22.2"W <i>DFO(6311927-01)</i>
Replace	depth of 10.1 metres with depth of 9.5 metres (See Chart 1, I10)	45°03'32.4"N 061°41'15.6"W <i>DFO(6311927-03)</i>

Replace	depth of 10.7 metres with depth of 8.9 metres (See Chart 1, I10)	45°04'47.3"N 061°41'11.8"W <i>DFO(6311927-20)</i>
Replace	depth of 8.5 metres with depth of 7.8 metres (See Chart 1, I10)	45°05'11.6"N 061°41'06.0"W <i>DFO(6311927-21)</i>
Add	depth of 9.2 metres (See Chart 1, I10)	45°05'16.7"N 061°40'52.7"W <i>DFO(6311927-23)</i>
Add	depth of 7.8 metres (See Chart 1, I10)	45°05'16.4"N 061°40'26.5"W <i>DFO(6311927-24)</i>
Add	depth of 6.8 metres (See Chart 1, I10)	45°05'00.8"N 061°39'52.9"W <i>DFO(6311927-25)</i>
Replace	depth of 4.6 metres with depth of 4.2 metres (See Chart 1, I10)	45°05'01.3"N 061°39'40.8"W <i>DFO(6311927-26)</i>
Add	depth of 4.8 metres (See Chart 1, I10)	45°05'16.6"N 061°39'31.0"W <i>DFO(6311927-27)</i>
Add	depth of 4.6 metres (See Chart 1, I10)	45°05'15.2"N 061°39'05.4"W <i>DFO(6311927-28)</i>
Add	depth of 3.8 metres (See Chart 1, I10)	45°05'18.0"N 061°38'52.6"W <i>DFO(6311927-29)</i>
Add	depth of 9.1 metres (See Chart 1, I10)	45°05'00.6"N 061°39'11.1"W <i>DFO(6311927-30)</i>
Add	depth of 9.7 metres (See Chart 1, I10)	45°04'59.9"N 061°38'41.8"W <i>DFO(6311927-31)</i>
Delete	depth of 10.4 metres (See Chart 1, I10)	45°05'02.5"N 061°38'28.8"W <i>DFO(6311927-32)</i>
Add	depth of 9.1 metres (See Chart 1, I10)	45°05'01.7"N 061°38'10.8"W <i>DFO(6311927-33)</i>

**4328 - Lunenburg Bay - New Edition - 10-JUL-1998 - NAD 1983**  
04-JUL-2025

LNM/D. 26-MAY-2023

Replace	red starboard hand lighted pillar buoy FI R, marked E64 with red starboard hand lighted spar buoy FI R, marked E64 (See Chart 1, Qb)	44°21'54.6"N 064°18'02.1"W <i>LL(439) DFO(6311982-01)</i>
---------	--	--

**4328 - Lunenburg Harbour - New Edition - 10-JUL-1998 - NAD 1983**

04-JUL-2025

LNMD. 26-MAY-2023

Replace red starboard hand lighted pillar buoy Q R, marked E66 with  
red starboard hand lighted spar buoy Q R, marked E66  
(See Chart 1, Qb)

44°22'19.3"N 064°18'16.5"W

LL(439.8) DFO(6311982-02)

Replace green port hand lighted pillar buoy FI G, marked E77 with  
green port hand lighted spar buoy FI G, marked E77  
(See Chart 1, Qc)

44°22'28.0"N 064°18'37.6"W

LL(441) DFO(6311982-03)

**4386 - St. Margaret's Bay - New Edition - 16-JUL-2004 - NAD 1983**

25-JUL-2025

LNMD. 27-DEC-2024

Amend 'Taylor I' to read 'Dover I'

44°29'00.1"N 063°52'08.5"W

DFO(6312012-01)

**4425 - St. Peters Bay - New Edition - 01-NOV-2002 - NAD 1983**

18-JUL-2025

LNMD. 07-MAR-2025

Delete ENTRANCE TO/ENTRÉE À ST. PETERS BAY 'Inset'

46°26'23.4"N 062°43'26.5"W

DFO(6311973-01)

Delete note 'Inset/Cartouche' and limits of inset  
(See Chart 1, A19)

46°27'00.7"N 062°44'06.9"W

DFO(6311973-02)

Add Channel Buoyed/Chenal balisé

46°26'30.6"N 062°43'36.1"W

DFO(6311973-03)

**4515 - Hare Bay - New Edition - 20-NOV-1998 - NAD 1983**

25-JUL-2025

LNMD. 23-AUG-2024

Delete depth of 9 fathoms, 3 feet  
(See Chart 1, I10)

51°14'57.8"N 055°57'03.3"W

DFO(6311948-02)

Add depth of 6 fathoms  
(See Chart 1, I10)

51°14'58.7"N 055°57'07.3"W

DFO(6311948-03)

Add depth of 20 fathoms  
(See Chart 1, I10)

51°14'51.4"N 055°55'29.4"W

DFO(6311948-05)

Delete depth of 11 fathoms  
(See Chart 1, I10)

51°13'51.0"N 055°57'14.3"W

DFO(6311948-10)

Add depth of 9 fathoms, 4 feet  
(See Chart 1, I10)

51°13'52.2"N 055°57'10.7"W

DFO(6311948-11)

Delete depth of 6 fathoms  
(See Chart 1, I10)

51°10'25.4"N 055°58'40.8"W

DFO(6311948-13)

Add	depth of 5 fathoms, 4 feet (See Chart 1, I10)	51°10'22.1"N 055°58'44.0"W <i>DFO(6311948-14)</i>
Add	depth of 5 fathoms, 1 foot (See Chart 1, I10)	51°10'08.4"N 055°58'52.4"W <i>DFO(6311948-17)</i>
Delete	depth of 2 fathoms, 3 feet (See Chart 1, I10)	51°09'23.1"N 055°58'02.4"W <i>DFO(6311948-20)</i>
Add	depth of 1 fathom (See Chart 1, I10)	51°09'22.0"N 055°57'59.5"W <i>DFO(6311948-21)</i>
<b>4518 - Ariege Bay - New Edition - 08-NOV-2002 - NAD 1983</b>		
25-JUL-2025		LNMD. 23-AUG-2024
Delete	depth of 8 fathoms (See Chart 1, I10)	51°14'57.7"N 055°57'08.1"W <i>DFO(6311948-01)</i>
Add	depth of 6 fathoms (See Chart 1, I10)	51°14'58.7"N 055°57'07.3"W <i>DFO(6311948-03)</i>
Delete	depth of 6 fathoms, 3 feet (See Chart 1, I10)	51°14'53.5"N 055°57'15.6"W <i>DFO(6311948-04)</i>
Add	depth of 20 fathoms (See Chart 1, I10)	51°14'51.4"N 055°55'29.4"W <i>DFO(6311948-05)</i>
Delete	depth of 7 fathoms (See Chart 1, I10)	51°14'18.1"N 055°56'15.8"W <i>DFO(6311948-06)</i>
Add	depth of 4 fathoms, 4 feet (See Chart 1, I10)	51°14'17.4"N 055°56'15.2"W <i>DFO(6311948-07)</i>
Add	depth of 9 fathoms, 5 feet (See Chart 1, I10)	51°13'54.2"N 055°57'08.5"W <i>DFO(6311948-08)</i>
Delete	depth of 11 fathoms (See Chart 1, I10)	51°13'51.7"N 055°57'13.8"W <i>DFO(6311948-09)</i>
Add	depth of 9 fathoms, 4 feet (See Chart 1, I10)	51°13'52.2"N 055°57'10.7"W <i>DFO(6311948-11)</i>
Replace	depth of 7 fathoms with depth of 5 fathoms, 5 feet (See Chart 1, I10)	51°10'33.7"N 055°58'10.6"W <i>DFO(6311948-12)</i>

Delete	depth of 6 fathoms (See Chart 1, I10)	51°10'25.4"N 055°58'40.8"W <i>DFO(6311948-13)</i>
Add	depth of 5 fathoms, 4 feet (See Chart 1, I10)	51°10'22.1"N 055°58'44.0"W <i>DFO(6311948-14)</i>
Replace	depth of 12 fathoms with depth of 8 fathoms, 1 feet (See Chart 1, I10)	51°10'06.1"N 055°59'13.2"W <i>DFO(6311948-15)</i>
Delete	depth of 7 fathoms (See Chart 1, I10)	51°10'07.4"N 055°58'54.8"W <i>DFO(6311948-16)</i>
Add	depth of 5 fathoms, 1 foot (See Chart 1, I10)	51°10'08.4"N 055°58'52.4"W <i>DFO(6311948-17)</i>
Delete	depth of 5 fathoms (See Chart 1, I10)	51°09'31.4"N 055°58'57.6"W <i>DFO(6311948-18)</i>
Add	depth of 3 fathoms, 2 feet (See Chart 1, I10)	51°09'32.0"N 055°58'55.8"W <i>DFO(6311948-19)</i>
Add	depth of 1 fathom (See Chart 1, I10)	51°09'22.0"N 055°57'59.5"W <i>DFO(6311948-21)</i>

**4905 - Cape Tormentine à / to West Point - New Edition - 29-DEC-2000 - NAD 1983**  
18-JUL-2025

LNMD. 04-APR-2025

Add	green port hand lighted can buoy FI G, marked QX1 (See Chart 1, Qc)	46°40'21.6"N 064°42'36.1"W <i>(G2025072) LL(1129.1) DFO(6311990-01)</i>
Add	green port hand lighted spar buoy FI G, marked XR1 (See Chart 1, Qc)	46°34'56.8"N 064°43'01.5"W <i>(G2025086) LL(1127.3) DFO(6312003-01)</i>
Add	red starboard hand lighted spar buoy FI R, marked XR2 (See Chart 1, Qb)	46°34'58.1"N 064°43'01.4"W <i>(G2025087) LL(1127.4) DFO(6312004-01)</i>

**4906 - West Point à / to Baie de Tracadie - New Chart - 18-MAR-1988 - NAD 1983**  
18-JUL-2025

LNMD. 28-FEB-2025

Add	green port hand lighted can buoy FI G, marked QX1 (See Chart 1, Qc)	46°40'21.6"N 064°42'36.1"W <i>(G2025072) LL(1129.1) DFO(6311990-01)</i>
-----	--	--

**4909 - Richibucto Harbour - New Chart - 17-JUN-1988 - NAD 1983**  
18-JUL-2025

LNMD. 24-MAY-2024

Add	green port hand lighted can buoy FI G, marked QX1 (See Chart 1, Qc)	46°40'21.6"N 064°42'36.1"W <i>(G2025072) LL(1129.1) DFO(6311990-01)</i>
-----	--	--

**4920 - Shippegan Harbour - New Edition - 14-DEC-2018 - NAD 1983**

11-JUL-2025

LNMD/D. 20-JUN-2025

Reposition red and white fairway lighted spar buoy Mo(A), marked TJ  
(See Chart 1, Qd)

from 47°42'30.4"N 064°39'51.1"W  
to 47°42'30.2"N 064°39'53.9"W  
(G2025065) LL(1248) DFO(6311983-01)

**5300 - Baie D'Ungava / Ungava Bay - New Edition - 28-MAY-2004 - Unknown**

11-JUL-2025

LNMD/D. 16-FEB-2024

Add underwater rock of unknown depth, dangerous to surface navigation with  
legend 'Rep (2024)'  
(See Chart 1, K13, I3.2)

59°52'34.0"N 063°58'31.0"W

DFO(6605523-01)

**5450 - Hudson Strait/Détroit d'Hudson - New Edition - 08-JUL-2005 - Unknown**

11-JUL-2025

LNMD/D. 09-MAY-2025

Add underwater rock of unknown depth, dangerous to surface navigation with  
legend 'Rep (2024)'  
(See Chart 1, K13, I3.2)

59°52'34.0"N 063°58'31.0"W

DFO(6605523-01)

**6022 - Lake Rosseau and/et Lake Joseph - Sheet/Feuille 1 - New Edition - 04-MAR-2005 - NAD 1983**

18-JUL-2025

LNMD/D. 16-FEB-2024

Add green port hand spar buoy, marked P3/1  
(See Chart 1, Qc)

45°08'09.0"N 079°40'36.0"W

(D2025020) DFO(6605526-01)

**6022 - Lake Rosseau and/et Lake Joseph - Sheet/Feuille 2 - New Edition - 04-MAR-2005 - NAD 1983**

18-JUL-2025

LNMD/D. 16-FEB-2024

Add green port hand spar buoy, marked P3/1  
(See Chart 1, Qc)

45°08'09.0"N 079°40'36.0"W

(D2025020) DFO(6605526-01)

**6241 - Berens River to/à Nelson River - Sheet/Feuille 1 - New Edition - 27-MAY-2005 - Unknown**

11-JUL-2025

LNMD/D. 09-MAY-2025

Amend green port hand spar buoy CS3 to read green port hand lighted spar  
buoy FI G, marked CS3  
(See Chart 1, Qc)

53°08'36.0"N 098°50'00.0"W

(P2025017) LL(1613.5) DFO(6605525-01)

**7010 - Davis Strait and/et Baffin Bay - New Edition - 12-JAN-1979 - Unknown**

11-JUL-2025

LNMD/D. 06-JUN-2025

Add underwater rock of unknown depth, dangerous to surface navigation with  
legend 'Rep (2024)'  
(See Chart 1, K13, I3.2)

59°52'34.0"N 063°58'31.0"W

DFO(6605523-01)

**7011 - Hudson Strait/Détroit D'Hudson to/à Groenland - New Edition - 02-SEP-1983 - Unknown**

11-JUL-2025

LNMD/D. 02-MAY-2025

Add underwater rock of unknown depth, dangerous to surface navigation with  
legend 'Rep (2024)'  
(See Chart 1, K13, I3.2)

59°52'34.0"N 063°58'31.0"W

DFO(6605523-01)



## Section 3: Radio Aids to Marine Navigation Corrections

### \*714/25 Radio Aids to Marine Navigation 2025 (Atlantic, St. Lawrence, Great Lakes, Lake Winnipeg, Arctic and Pacific)

#### Page 4-71

#### AMEND AS FOLLOWS:

#### 4.3.6 Sailing Trip Plan Service

All small craft operators, including those making day trips, are encouraged to file a Trip Plan with a responsible person. This person should be instructed to call the Joint Rescue Coordination Centre (JRCC) or Maritime Rescue Sub-Centre (MRSC) if the vessel becomes overdue. The telephone number **5** can be found in Section 4.3.7 of this publication and should be included with the Trip Plan.

#### Page 5-17

#### 5.9.1 Marine Weather Forecast Program

#### AMEND AS FOLLOWS:

Table 5-24 - Northern Canada: Production Schedule - NAVTEX Format

MCTS Centre	NAVTEX Transmitter	Header	Issue Time
Iqaluit / VFF	Iqaluit	FQCN36 CWNT FICN36 CWIS	05:30, 17:30 EDT / EST <del>07:00, 19:00</del> <b>06:30,</b> <b>18:30</b> UTC

#### Page 5-51

#### AMEND AS FOLLOWS:

#### 5.15.1 Ice Forecasts

Table 5-64- Ice Bulletins: Production Schedule - NAVTEX Format

MCTS Centre	NAVTEX Transmitter	Header	Issue Time
Placentia / VCP	Robin Hood Bay	FICN33 CWIS	<del>17:50 (W),</del> 21:50 <del>(S)</del> UTC
Sydney / VCO	Port Caledonia	FICN34 CWIS	22:10 UTC
Labrador / VOK	Cartwright	FICN35 CWIS	23:20 UTC
Iqaluit / VFF	Iqaluit	FICN36 CWIS	<del>07:00, 19:00</del> <b>06:30, 18:30</b> UTC
Les Escoumins / VCF	Moisie	FICN37 CWIS	14:50 UTC
Prescott / VBR	Ferndale	FICN38 CWIS	00:40, 12:40 UTC
Sarnia / VBE	Pass Lake	FICN39 CWIS	06:00, 18:00 UTC

## Section 4: Canadian Sailing Directions Corrections

---

The following **Canadian Sailing Directions** volumes have recently been updated on the [Canadian Hydrographic Service website](#).

No.	Title
<b>Atlantic Coast</b>	
<b>ATL 103</b>	Newfoundland, Southwest Coast
<b>ATL 104</b>	Cape North to Cape Canso (including Bras d'Or Lake)
<b>Central Canada</b>	
<b>CEN 300</b>	General Information, Great Lakes
<b>CEN 306</b>	Georgian Bay

Each volume includes a section entitled “Record of Changes” which lists all updates that are incorporated during the current calendar year.

## Section 5: List of Lights, Buoys and Fog Signals Corrections

The amendments are **highlighted** and deletions are **crossed out**. For general and region-specific information on the List of Lights, click on the following links: [Newfoundland and Labrador Coast](#), [Atlantic Coast](#), [Inland Waters](#) and [Pacific Coast](#).

No.	Name	Position ----- Latitude N. Longitude W.	Light Characteristics	Focal Height in m. above water	Nomi- nal Range	Description ----- Height in meters above ground	Remarks ----- Fog Signals
-----	------	--	--------------------------	--	-----------------------	--	---------------------------------

### NEWFOUNDLAND AND LABRADOR COAST

#### SOUTHWEST COAST (LL 121 – 172)

139.85 <b>H0264.6</b>	Ship Cove Wharf <b>Light</b>	Ramea Harbour. 47 31 15.2 057 23 12.7	Fl G	<b>5s</b>	4.3	2	Cylindrical mast.	<b>Flash 1 s; eclipse 4 s.</b> Year round.	Chart:4825 <b>Edn 07/25 (N25-025)</b>
140.55 139.84 <b>H0264.7</b>	Ship Cove Ferry Wharf <b>Light</b>	<b>Ramea.</b> 47 31 16.7 057 23 06.5	Fl R	<b>5s</b>	3.9	<b>5</b>	<b>Cylindrical</b> Mast. 2.6	<b>Flash 1 s; eclipse 4 s.</b> Year round.	Chart:4825 <b>Edn 07/25 (N25-028)</b>
<b>140.57</b>	<b>Ship Cove Floating Dock Light</b>	<b>47 31 17.6 057 23 13.4</b>	<b>Fl Y</b>	<b>5s</b>	<b>.....</b>	<b>.....</b>	<b>Pipe swing pole.</b>	<b>Flash 1 s; eclipse 4 s.</b> <b>Operates 24 h.</b> Year round.	Chart:4843 <b>Edn 07/25 (N25-029)</b>

#### NOTRE DAME BAY (LL 326 – 395)

374.3	<b>Perry</b> Island light buoy <b>DX3</b>	49 34 02.9 054 13 58.6	Fl G	4s	.....	.....	Green spar, marked " <b>DX3</b> ".	Seasonal.	Chart:4530 <b>Edn 07/25 (N25-026)</b>
381	Grandfather Rock light buoy <b>DX1</b>	<b>S. of Fogo</b> Island. 49 33 06.8 054 08 35.6	Fl G	4s	.....	.....	Green, marked " <b>DX1</b> ".	Seasonal.	Chart:4530 <b>Edn 07/25 (N25-027)</b>

### ATLANTIC COAST

#### BAY OF FUNDY, N.B. – EAST (LL 145 – 157)

145.6 <b>H4079</b>	Irving Canaport Floating Terminal							<b>Delete from list.</b>	Chart:4117 <b>Edn 07/25</b>
-----------------------	--------------------------------------	--	--	--	--	--	--	--------------------------	--------------------------------

#### BAY OF FUNDY, N.S. (LL 163 – 268)

217.5	Tiverton Breakwater							<b>Delete from list.</b>	Chart:4118 <b>Edn 07/25</b>
-------	------------------------	--	--	--	--	--	--	--------------------------	--------------------------------

#### NOVA SCOTIA, SOUTHEAST COAST (LL 327 – 684.02)

543 <b>H3621.4</b>	Angus L. Macdonald Bridge							<b>Delete from list.</b>	Chart:4202 <b>Edn 07/25</b>
-----------------------	------------------------------	--	--	--	--	--	--	--------------------------	--------------------------------

Notices to Mariners – Monthly Eastern Edition  
Section 5: List of Lights, Buoys and Fog Signals Corrections

No.	Name	Position ----- Latitude N. Longitude W.	Light Characteristics	Focal Height in m. above water	Nomi- nal Range	Description ----- Height in meters above ground	Remarks ----- Fog Signals
-----	------	--	--------------------------	--	-----------------------	--	---------------------------------

554 A. Murray Mackay Bridge Delete from list. Chart:4201  
H3628.3 Edn 07/25

556 Oceanographic Wharf Delete from list. Chart:4201  
H3630 Edn 07/25

**NORTHUMBERLAND STRAIT – EAST (LL 883.2 – 940.3)**

914 Caribou Harbour S. side of channel. Q G 1s ..... Green spar, marked "SS7". Seasonal (in place year round).  
light buoy SS7 45 44 59.7 062 40 31.4 Chart:4483  
Edn 07/25 (G25-090)

915 Caribou Harbour 45 45 02.5 Q R 1s ..... Red spar, marked "SS8". Seasonal (in place year round).  
light buoy SS8 062 40 33.1 Chart:4483  
Edn 07/25 (G25-091)

915.4 Caribou Harbour 45 44 57.2 FI R 4s ..... Red spar, marked "SS10". Seasonal (in place year round).  
light buoy SS10 062 40 43.5 Chart:4483  
Edn 07/25 (G25-092)

**GASPÉ – CHALEUR BAY (LL 1169.1 – 1426)**

1273.2 Harper Point Ferry Cable Delete from list. Chart:4913  
Edn 07/25

1273.3 Little Shippegan Ferry Cable Delete from list. Chart:4913  
Edn 07/25

**ST. LAWRENCE ESTUARY, GULF OF ST. LAWRENCE – RIVIÈRE DU LOUP (LL 1620 – 1772)**

1757.2 Grandes-Bergeronnes 48 13 34.2 FI R 4s ..... Red, marked "PRIV". Private aid.  
Yacht Club light buoy PRIV 069 33 20.0 Seasonal. Chart:1320  
Edn 07/25 (Q19-055)

1757.3 Grandes-Bergeronnes 48 13 20.4 FI G 4s ..... Green, marked "PRIV". Private aid.  
Yacht Club light buoy PRIV 069 33 13.7 Seasonal. Chart:1320  
Edn 07/25 (Q19-056)

**ST. LAWRENCE RIVER, RIVIÈRE DU LOUP – SOREL (LL 1823.8 – 2185.1)**

1827 Îles du Pot à l'Eau- de-Vie Delete from list. Chart:1234  
H2164 Edn 07/25 (Q25-052)

**INLAND WATERS**

**LAKE ONTARIO (LL 403.4 – 551)**

515 West Entrance light buoy TT3 Delete from list. Chart:2085  
Edn 07/25

Notices to Mariners – Monthly Eastern Edition  
Section 5: List of Lights, Buoys and Fog Signals Corrections

No.	Name	Position ----- Latitude N. Longitude W.	Light Characteristics	Focal Height in m. above water	Nomi- nal Range	Description ----- Height in meters above ground	Remarks ----- Fog Signals
-----	------	--	--------------------------	--	-----------------------	--	---------------------------------

517.16 Inner Harbour  
Information light  
buoy EKO-16

Delete from list.

Chart:2085  
Edn 07/25

### LAKE ERIE (LL 552 – 623)

592		On outer end of W. breakwater pier. 42 15 12.7 081 54 33.8	Fl	G	5s	11.0	9	White square tower. 9.2	Flash 2 s; eclipse 3 s. Year round. (Not maintained over winter.)
	Rondeau West Breakwater range								
593		012°40' 382 m from front.	F	G	.....	18.2	9	Square skeleton tower, orange triangular daymark with black vertical stripe. 16.2	Visible 180°. Year round. (Not maintained over winter.)

Chart:2181  
Edn 07/25 (B25-023)

### LAKE NIPIGON (LL 1162 – 1171)

1169	Gros Cap	49 39 32.9 088 35 55.9	Fl	W	4s	11.9	5	Cylindrical mast, red and white rectangular daymark. 4.9	Seasonal.
------	----------	---------------------------	----	---	----	------	---	--	-----------

Chart:N/A  
Edn 07/25 (D25-021)

### OTTAWA RIVER (LL 1255 – 1322)

1297.5	Deschênes light buoy K4	Britannia Bay. 45 22 28.4 075 50 11.3	Fl	R	4s	.....	.....	Red spar, marked "K4".	Seasonal (in place year round).
--------	----------------------------	---	----	---	----	-------	-------	------------------------	---------------------------------

Chart:1550  
Edn 07/25 (B25-024)

### TRENT-SEVERN WATERWAY (LL 1346.2 – 1375.1)

1354 Sturgeon Point  
light buoy CP

Delete from list.

Chart:2025  
Edn 07/25